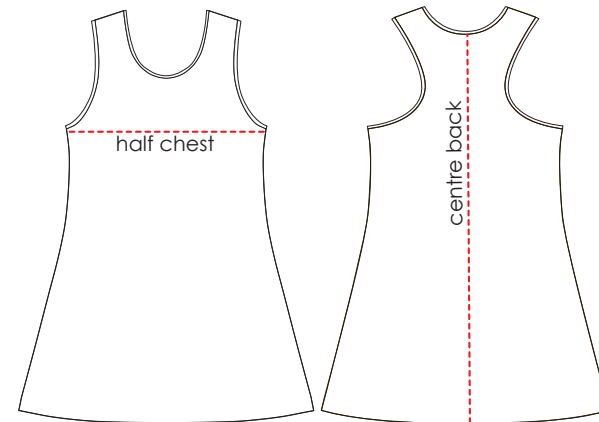




BASIC DRESS and BASIC2 DRESS

The measurements shown in the chart below are garment measurements taken with the dress lying on a flat surface. If you're unsure of sizing try comparing these measurements to a singlet or similar garment you've got at home that fits you. Use the diagram opposite to work out where the measurements should be taken. The size you choose should be fairly consistent with the size you would normally wear.

The diagram shows a basic dress with cutaway back. Sizing is the same for basic and basic2 dresses with cutaway or full back.



	kids							adults									
	K4	K6	K8	K10	K12	K14	K16	6	8	10	12	14	16	18	20	22	24
half chest	27	29	31	33	36	38	41	35	37	40	42	44	46	48	51	53	55
centre back	54	61	66	68	69	70	71	76	77	78	79	80	81	82	83	84	85

measurements are in centimetres and are the actual measurements of the garment (plus or minus 1cm) as it lies on a flat surface

The size chart is intended as a guide only to help determine your size. Accurate sizing from the size chart depends on the accuracy of your measurements, so you might want to get a friend to help you with the tape measure. Contact us for advice if you are unsure of sizing as dresses are custom made to your order and cannot be returned or exchanged if you order the wrong size.