

BE WELL  
MY FRIEND!



Symbol Weeks Dye Works  
 ■ Kentucky Bluegrass  
 X Aqua  
 | Grapefruit  
 \ Red Aztec  
 O Sunset

WDW#  
 2152  
 2131  
 2245  
 2258  
 2246






To help support, in a tiny way, my special Needle-  
 work Shops during Social Distancing, I've designed a  
 little freebie for shops to kit up as they wish. I hope a  
 needle and thread in your own little corner brings you  
 comfort. I'm suggesting a neutral fabric in your  
 favorite count and the following fibers.

Stitch Count: 89 x 33



## Be Well

## Lucy Beam Love in Stitches

	Number	Name:	Strands	Length	Stitches
	GAK 7058	Tomato	2	1.71 yd.	129
	GAK 7078	Toffee	2	0.65 yd.	49
	GAK 7080	Endive	2	3.48 yd.	262
	GAK 8003	Espresso Bean	2	1.56 yd.	117
	GAK 8014	Carriage Black	2	8.81 yd.	660
	GAS 1020	Pebble	2	2.65 yd.	199



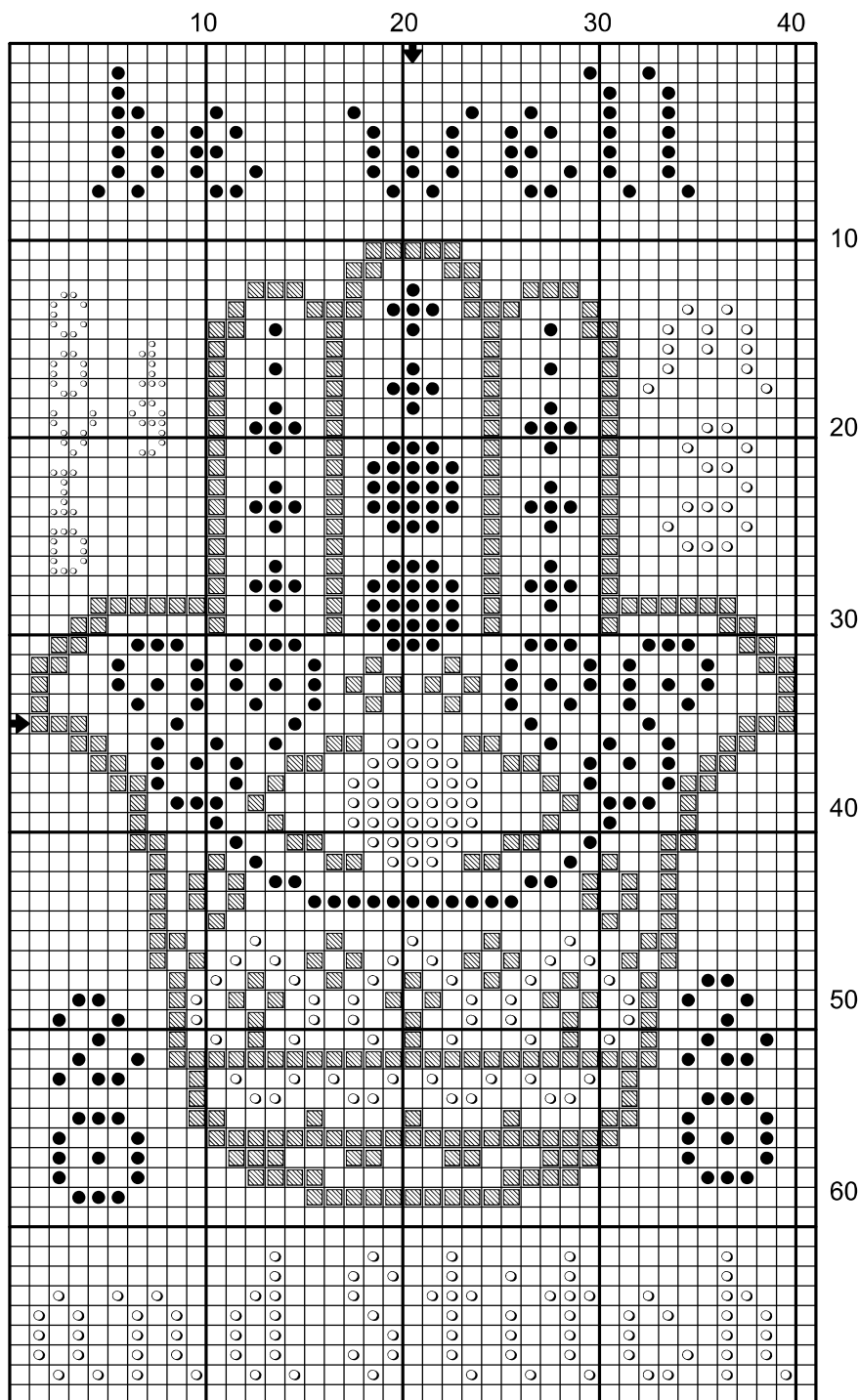
No. 31



Be Well and Stitch



# Bendy Stitchy Designs ~ #BeWellAndStitch



X	Type	Color	DMC
●	GA	Witching Hour	09
○	CC	Lighthouse	05
▨	CC	Chesapeake Bay	3768

**Fabric:** Anything! The Black Cauldron has some beautiful new fabrics.

**Stitch count:** 39w x 67h

Please kit this up and stitch it in colors that make you happy. Or better yet, call your LNS and try out these BRAND NEW colors from some great dyers.

©2020 Bendy Stitchy Designs, LLC. Bendy Stitchy cross stitch patterns are for personal use only. Please do not copy or share. All paper and PDF patterns are copyright protected and are not to be redistributed, reproduced, or shared in any manner. Thank you for respecting my rights as a creator.

It would make my day if you would tag me on social media:

**Instagram:** @michellebendy  
@bendystitchydesigns

**Facebook:** Michelle Bendy

**Hashtags:** #BendyStitchyDesigns  
#BeWellAndStitch

To find other free charts in this collaborative effort, search the hashtag #bewellandstitch on Instagram or call your LNS.

# Be Well and Stitch

Stitch Count: 39w x 67h

---

**Classic Colorworks:** Chesapeake Bay,  
Lighthouse

**The Gentle Art:** Witching Hour

**DMC conversion:** 5, 9, 3768

---

Fabric: choose your own adventure!

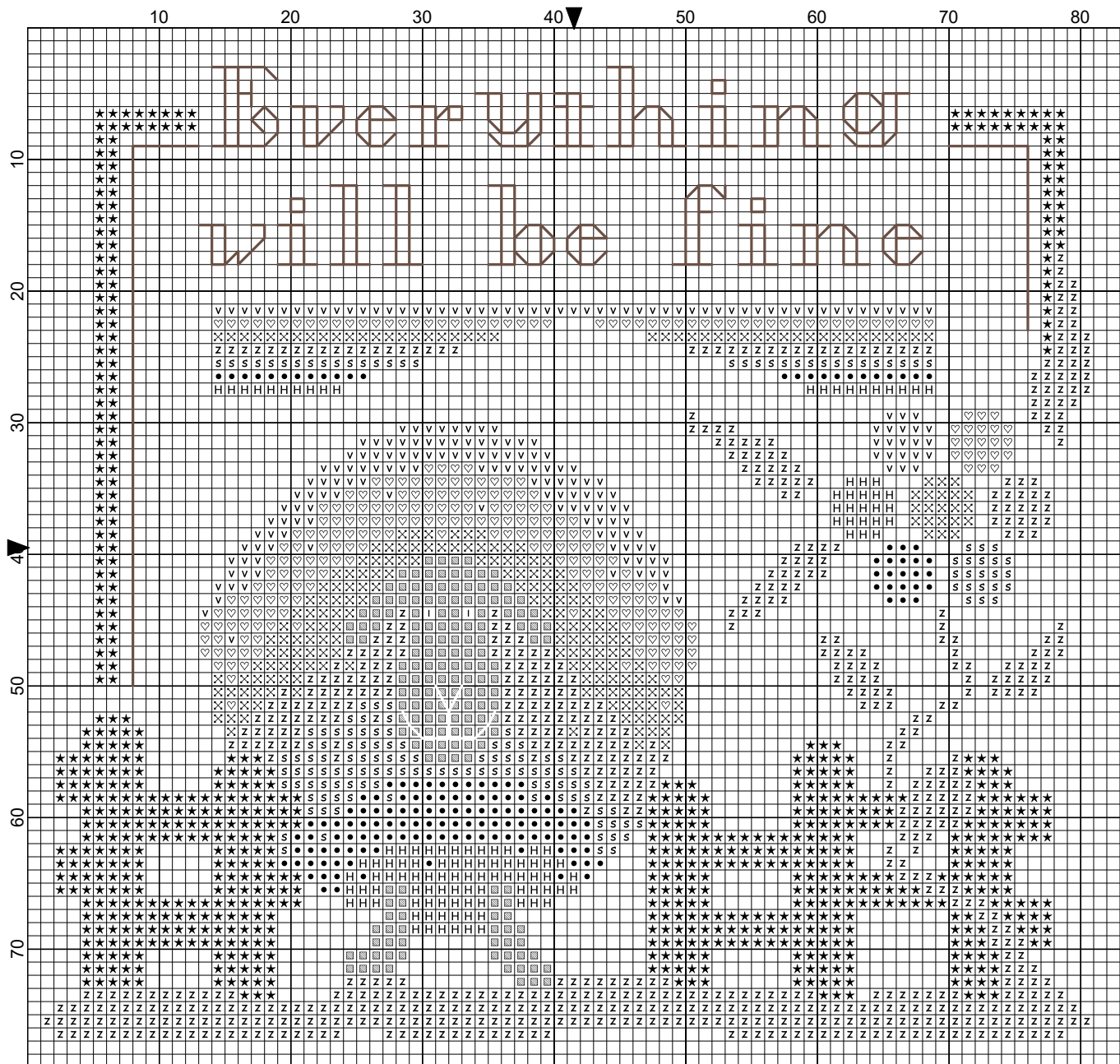
---

This chart is designed as part of a collaboration  
with many, many very talented designers  
in order to support our shops and  
our fellow stitchers during  
the COVID-19 quarantine (and beyond).  
Please check out the hashtag #BeWellAndStitch  
or contact your LNS for more charts in this series.

---

Visit  
[BendyStitchyDesigns.com](http://BendyStitchyDesigns.com)  
for the latest information  
on upcoming designs





The Primitive Hare, Licensed to:

# Everything will be fine

**Author:** Isabella Abbiati  
**Copyright:** The Primitive Hare  
**Grid Size:** 83W x 79H  
**Design Area:** 14,51 cm x 13,43 cm (80 x 74 stitches)

- Legend:**
- |   |     |      |                   |   |     |     |                    |   |     |      |                |
|---|-----|------|-------------------|---|-----|-----|--------------------|---|-----|------|----------------|
| ☐ | DMC | 776  | pink - md         | ☐ | DMC | 504 | blue green - vy lt | ☐ | DMC | 5200 | snow white     |
| ☐ | DMC | 352  | coral -lt         | ● | DMC | 341 | blue violet - lt   | ★ | DMC | 8    | driftwood - dk |
| ☒ | DMC | 744  | yellow - pl       | ☐ | DMC | 554 | violet - lt        |   |     |      |                |
| ☐ | DMC | 3348 | yellow green - lt | ☐ | DMC | 310 | black              |   |     |      |                |

**Backstitch Lines:**  
DMC-5200 snow white      ——— DMC-8 driftwood - dk







# Be Well Mini Bouquet

**Fabric:** 40 ct Lakeside Linens Exemplar but any neutral coloured fabric and 32 or 36 ct fabric can be used.

**Design Count:** 43 x 51

**Design Size:** 2 x 2 ¼" on 40 ct.

Cross stitch using 1 strand on 36 and 40 ct and 2 strands on 32 ct in the colours noted.

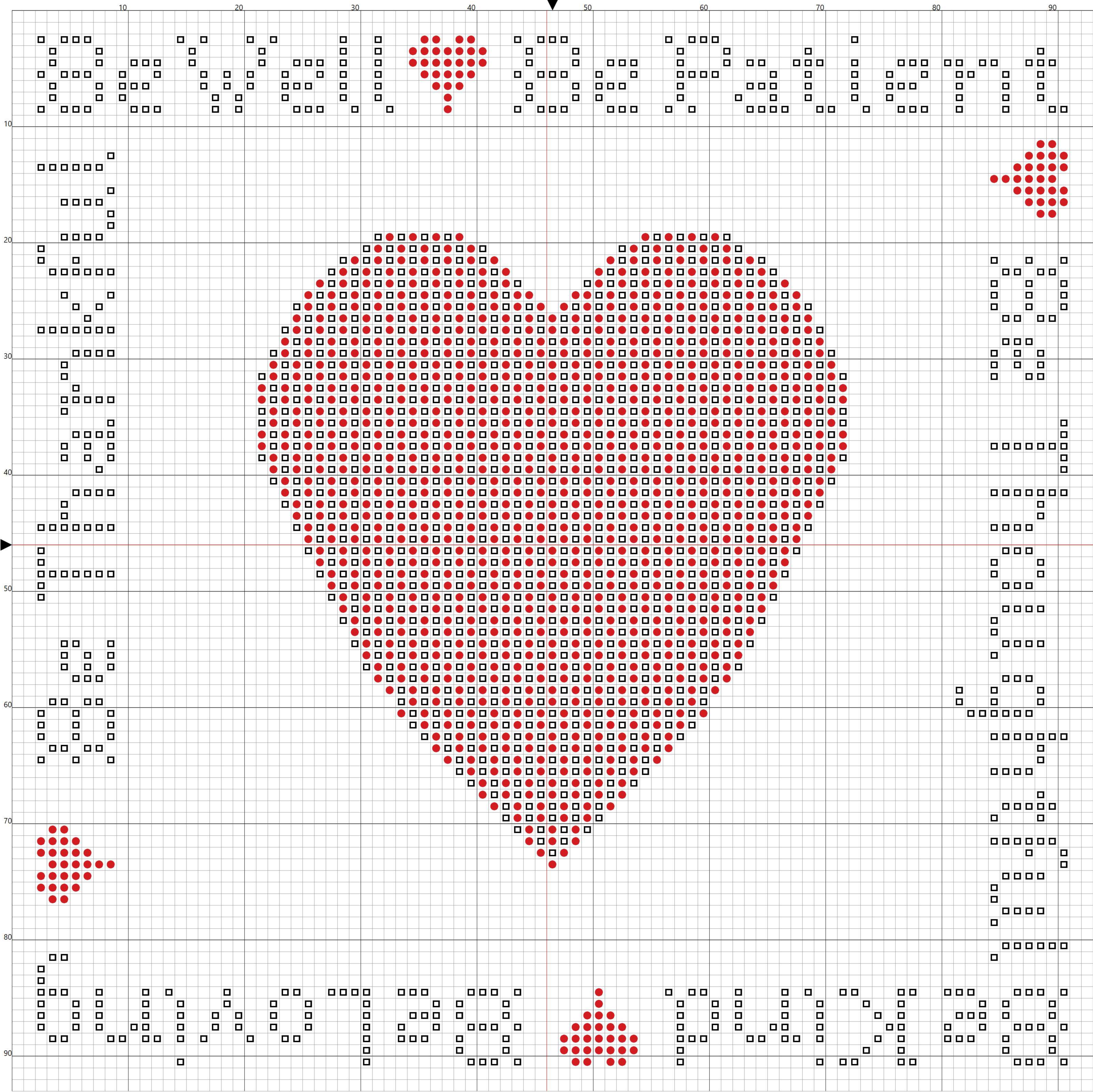
Backstitch words in Molasses.

Classic Colorworks		Weeks Dye Works	
▲	Wilderness	^	Cocoa
The Gentle Art		×	Grits
≡	Holly Berry Red	⌌	Lily Pad
◆	School House Red	○	Merlot
Weeks Dye Works			Molasses
↓	Bees Knees	!	Peony
/	Chestnut	≠	Yukon Gold





# Be Well







© 2020 NeedleWorkPress

ROSE	DMC 760
CLARET	DMC 816
TAN	DMC 436
BROWN	DMC 801
DARK GREEN	DMC 986
MEDIUM GREEN	DMC 470
GRAY GREEN	DMC 3072
GOLD	DMC 3820
DARK BLUE	DMC 312
MEDIUM BLUE	DMC 322
OFF WHITE	DMC 3865

We selected basic DMC colors for "Refuse to Wilt" so you could color match to your favorite cotton overdyed or silk. We had some random silk sitting nearby as we selected colors. Beautiful greens include Classic Colorworks Belle Soir in Beanstalk & Gloriana 12-strand silk in Olivine. We also love Gumnut Stars 708 (golden yellow).

## BE WELL Refuse to Wilt

Inspired by a flower basket from an antique sampler, this free chart can be stitched with suggested colors or scraps in your stitching basket. It measures 75 stitches wide x 50 stitches high. The approximate design size over two threads of linen would be:

	Wide	High
28ct	5.4"	3.6"
32ct	4.7"	3.1'
36ct	4.2"	2.8"
40ct	3.75"	2.5"

We look forward to seeing how you adapt and adjust this chart to make it your own. Be well,

*Vickie & Maegan*

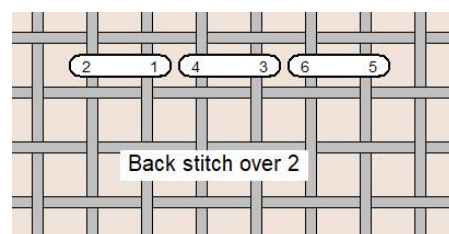
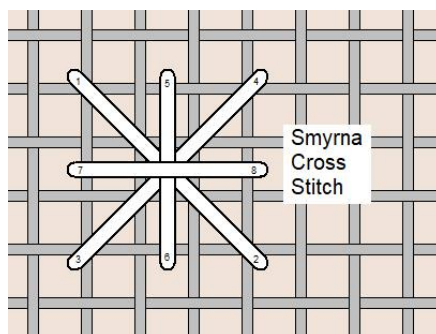
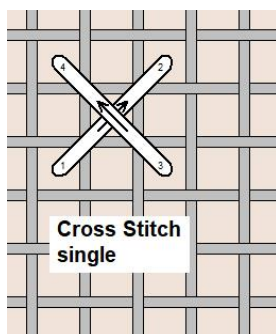
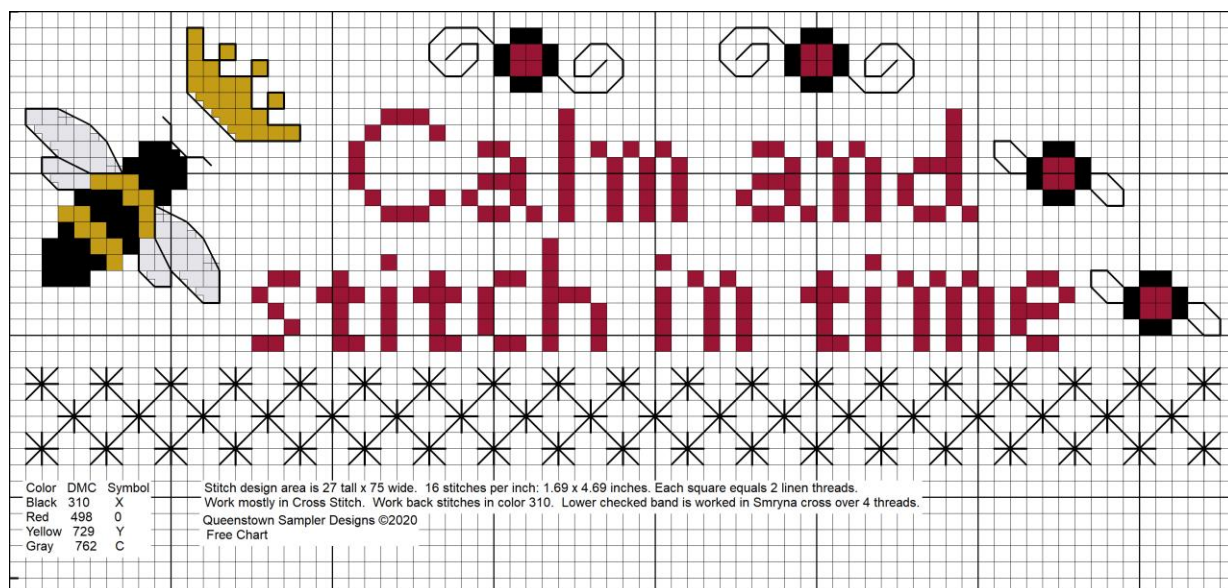


eedle  ork  ress



# Queenstown Sampler Designs

## Free Chart



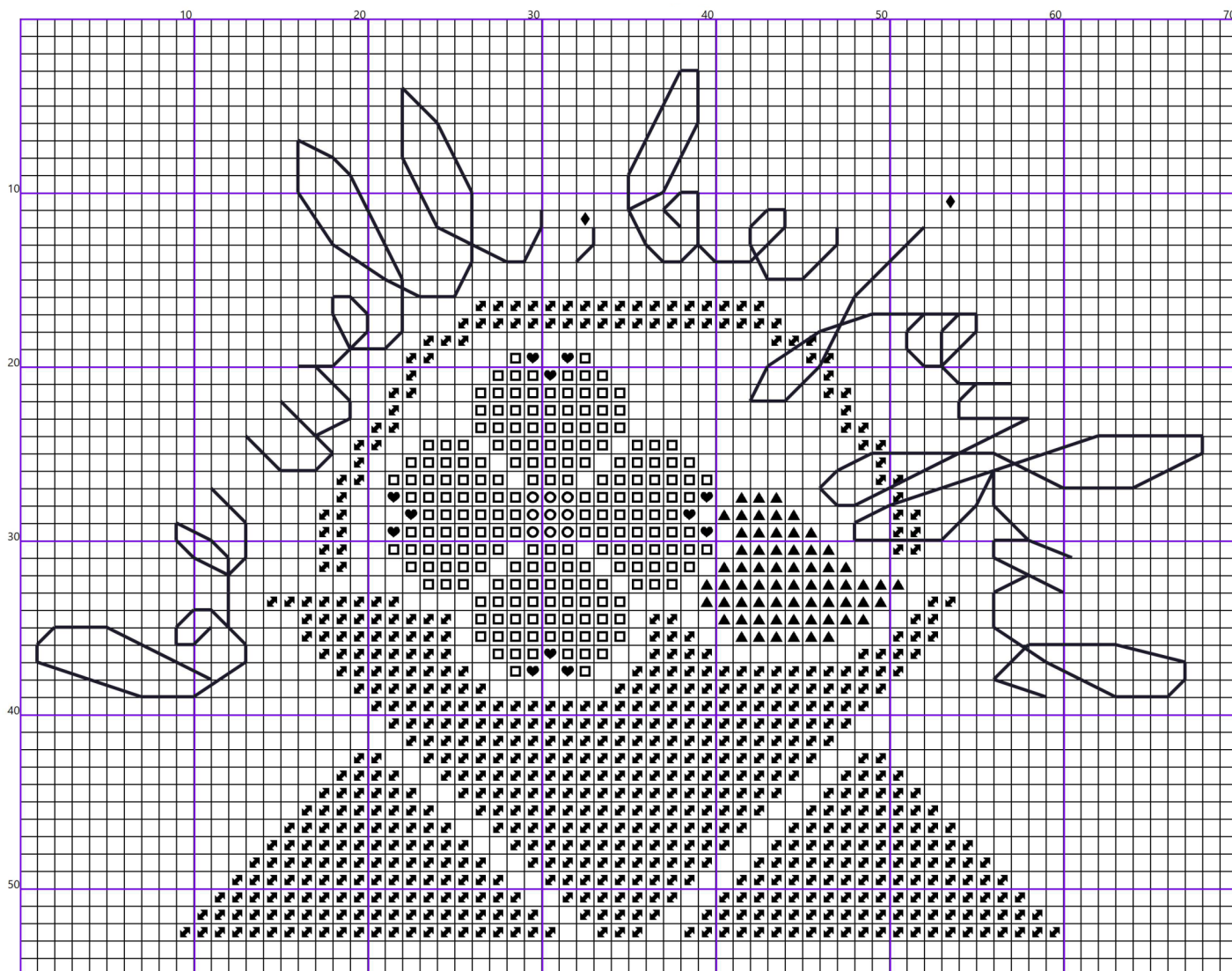
Barbara L. Hutson  
 Queenstown Sampler Designs  
 284 Wye Knot Court  
 Queenstown MD 21658  
[www.queenstown-sampler-designs.com](http://www.queenstown-sampler-designs.com)





be well, be joyful





	Number	Description
♥	DMC 349	Coral dark
○	DMC 445	Lemon light
◆	DMC 939	Navy Blue very dark
□	DMC 3865	Winter White
▲	DCV 4045	Evergreen Forest vr
■	DCV 4140	Driftwood vr

DCV = DMC Color Variations...the basket and leaf are stitched in these and will provide interest to the large blocks of color

Words are backstitched in DMC 939

Fabric recommendation is Picture This Plus 28Count Icon Lugana. Stitch 2 over 2.

Stitch count is 50 high and 67 wide

*My brethren, count it all joy when you fall into various trials...*

*James 1:2*



# #bewellandstitch... a free Heartstring Samplery design by Beth Twist... for those Sheltering in Place

**Author:** Beth Twist  
**Company:** Heartstring Samplery  
**Copyright:** 2020... All Rights Reserved...  
**Website:** [www.thetwistfamily.blogspot.com](http://www.thetwistfamily.blogspot.com)  
**Grid Size:** 83W x 54H  
**Design Area:** 5.79" x 3.71" (81 x 52 stitches)

## Legend:

	CCC	254	Chesapeake Bay
	CCC	255	Mariner's Compass
	DMC	310	black
	DMC	3859	rosewood - lt
	GAF	0440	Maple Syrup
	GAF	7100	Ruby Slipper
	WDW	1240	Dirt Road
	WDW	2194	Lily Pad



## Backstitch Lines:

— CCC-254 Chesapeake Bay

— CCC-255 Mariner's Compass

— DMC-310 black

You may or may not want to stitch in the little "COVID19" that I charted above the bird. I wanted to include this as a reminder to myself of the unprecedented time that we are living in and the motivation behind this free chart. You could instead leave that area unstitched, or put in a simple initial and date. This free chart is part of a movement of several of your favorite cross stitch designers hoping to encourage both safe and careful practices, but also wanting to help support the needlework shop businesses whose doors may be temporarily closed by the new federal regulations. In that light, I chose to call for some of the brand new thread colors recently released at the 2020

Nashville Needlework Market. If you also want to try out a lovely new linen color,

I recommend Picture This Plus "Vellum" on the count of your choosing.

To find the other free charts in this collaborative series, search the hashtag #bewellandstitch or give your LNS a call.

#bevellandstitch... a free Heartstring Samplery design by Beth Twist... for those Sheltering in Place



2020... All Rights Reserved... For new designs & info, go to [www.thetwistfamily.blogspot.com](http://www.thetwistfamily.blogspot.com)



# Choose Happy

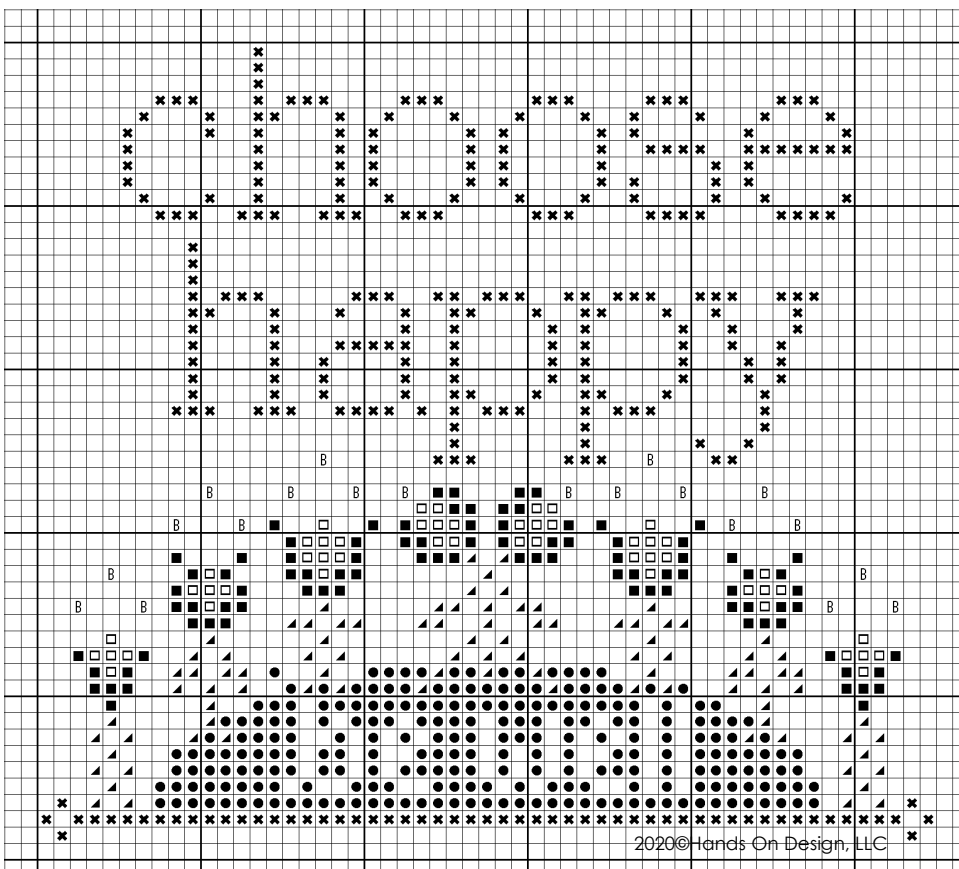
Sometimes, it is a conscious choice to be happy & now, more than ever, we might just have to say these words out loud... 'I choose happy'.



A conversation among a group of designers has come together as a tiny but mighty movement to create a project of free designs for stitchers. Imagine a basket or bowl filled to the brim with wellness needlework! Follow the hashtag **#bewellandstitch** to stay in the loop with this project.

Once you have your free charts in hand, please consider, if you are able, placing an order with your needlework shop for threads or fabrics, embellishments or trims. Many shops are offering specials as they continue to serve stitchers. As always, you can find a list of shops that carry Hands On Design charts on my website.

Cathy, Hands On Design #handsondesign #bewellandstitch #choosehappy



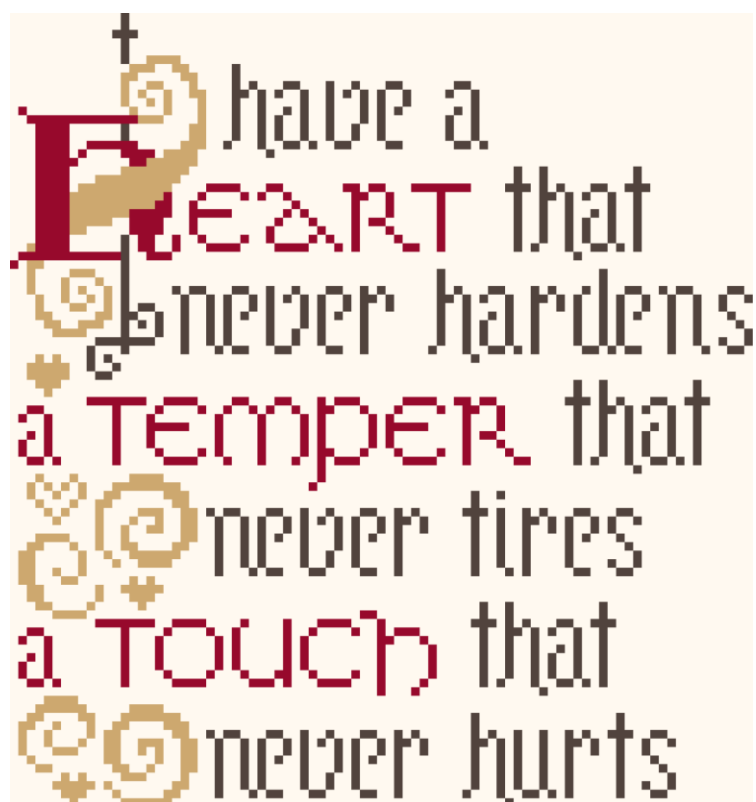
I plan to stitch my model on 36ct Weeks Dye Works Linen with the colors listed below. Please choose a linen/aida and a color palette that makes you happy.

- WDW Aztec Red [3328]
- WDW Capri [597]
- ▲ WDW Pepperoncini [166]
- WDW Grasshopper [580]
- ℳ WDW Yukon Gold [3822]
- ✕ WDW Flatfish [610]

Stitch Count: 55 x 59

## Have a Heart

*A quotation from Charles Dickens*

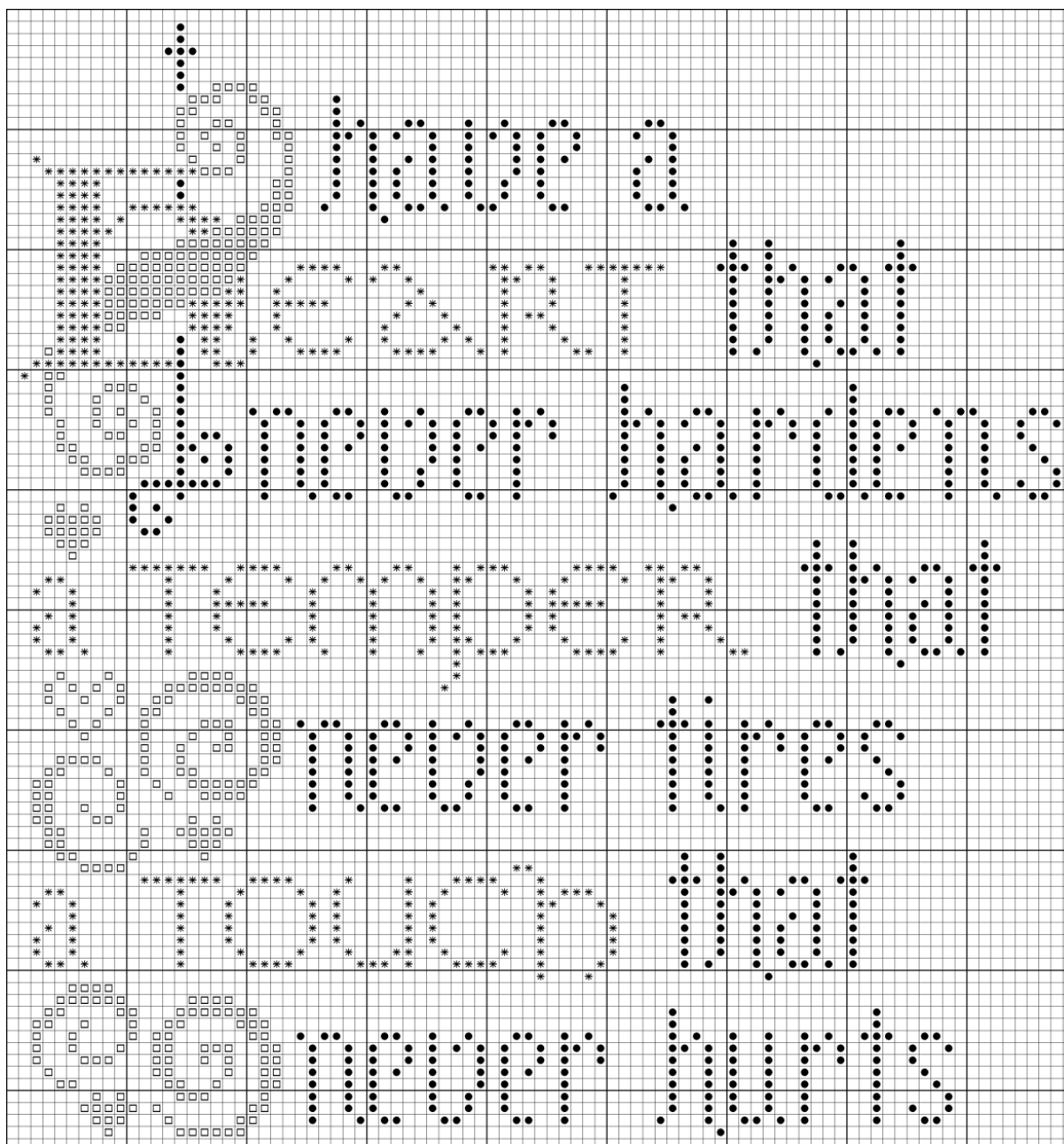


*Take care of yourself,  
your family,  
your neighbor,  
and your community.*

**BE WELL**

*[www.ericamichaels.com](http://www.ericamichaels.com)*

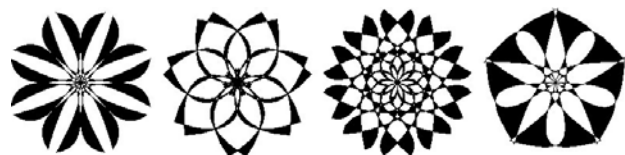
# Have a Heart



Stitch count: 87 wide x 93 high. Suggested fabrics: any neutral will do nicely; I've looked at French Vanilla from R&R Reproductions and Picadill White Legacy linen. Three thread options are noted here - Weeks Dye Works cotton, Belle Soie silk from Classic Colorworks and DMC.

*	WDW <i>Crimson</i>	Belle Soie Silk: <i>Rose of Sharon</i>	DMC 902
□	WDW <i>Schneckley</i>	Belle Soie Silk: <i>Pecan Pie</i>	DMC 831/832
●	WDW <i>Swamp Water</i>	Belle Soie Silk: <i>Briar Patch</i>	DMC 3371

[www.ericamichaels.com](http://www.ericamichaels.com)

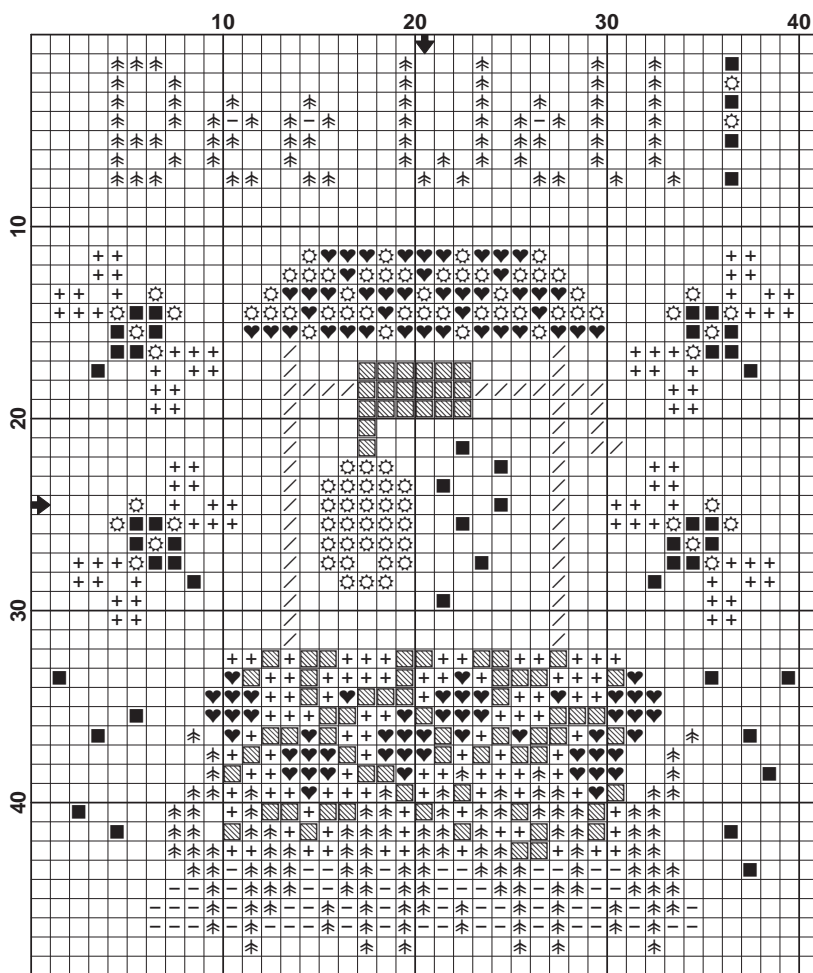


# Ink Circles

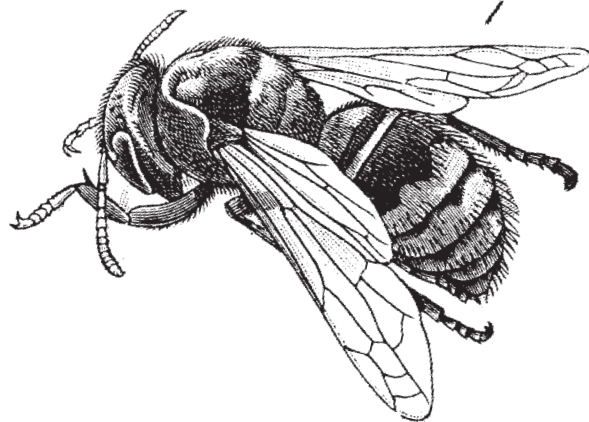
Ink Spot #20:

## Bee Well

Size: 39w x 47h

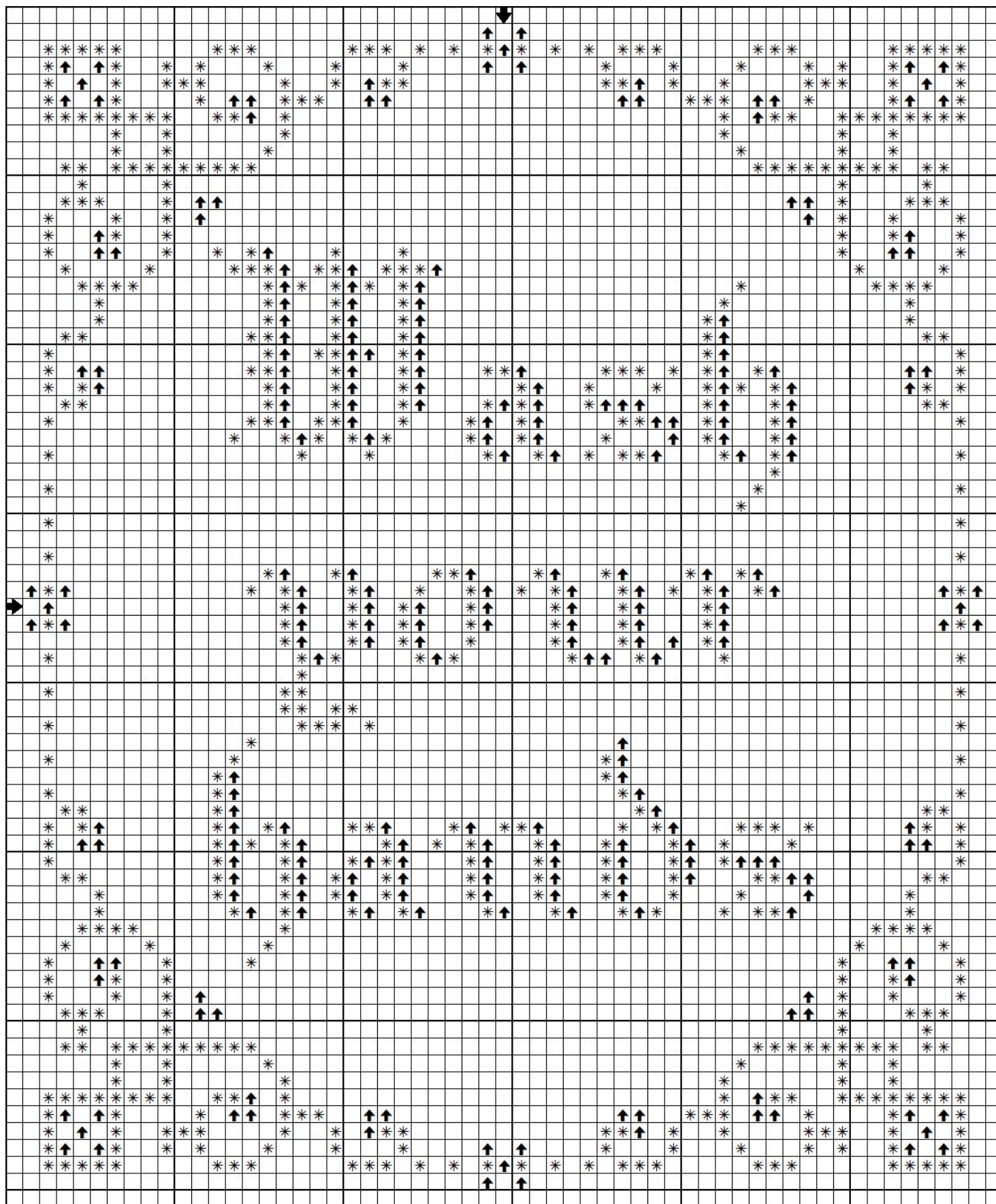


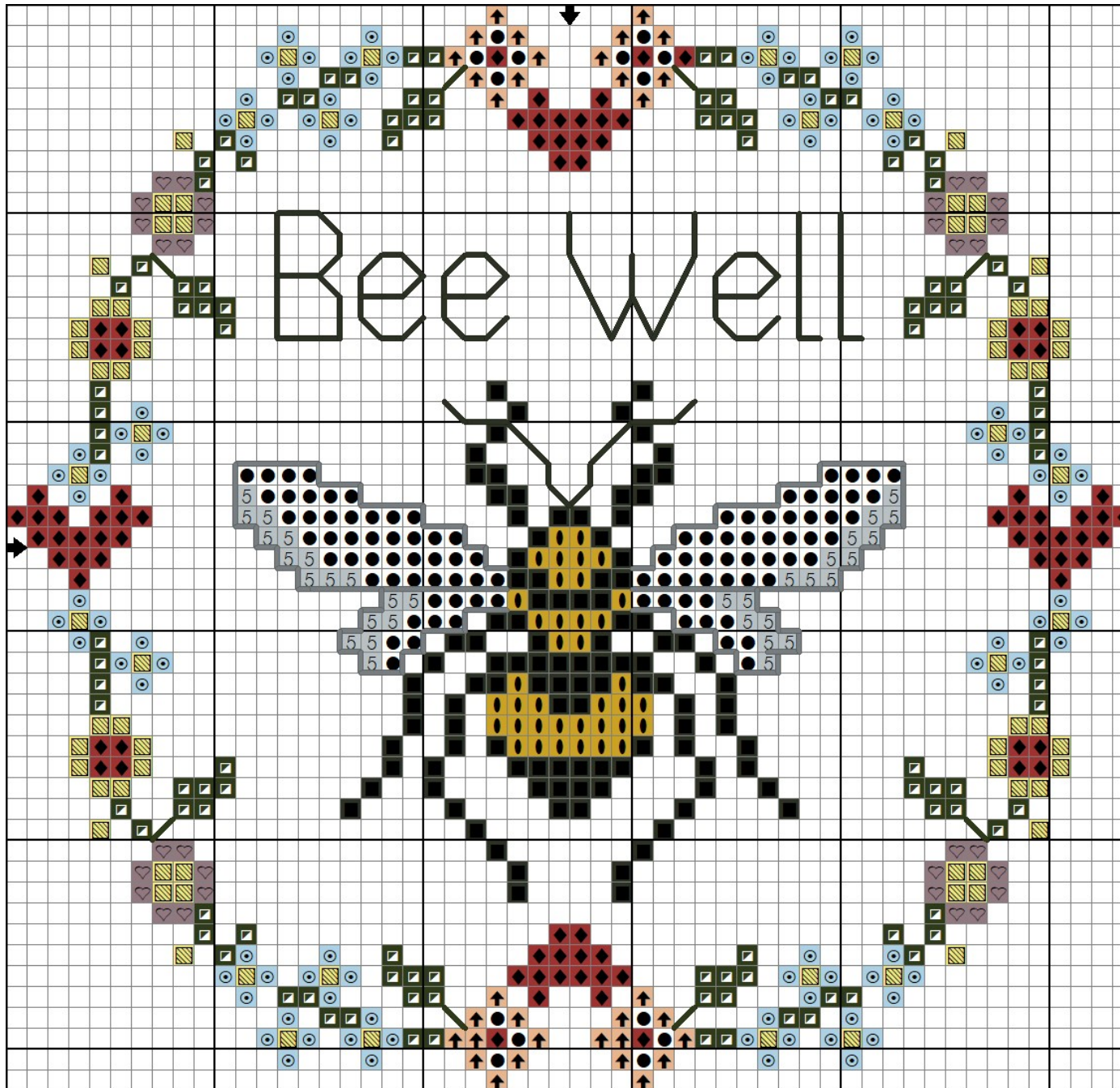
	DMC	Color
■	310	Black
■	469	Avocado Green
■	472	Avocado Green-UL LT
■	742	Yellow-DK
+	0024	White Lavender
/	3802	Antique Mauve-VY DK
♥	3831	Raspberry-DK
■	3864	Mocha Beige-LT











Symbol	Threads
	DMC 304
	DMC 310
	DMC 415
	DMC 727
	DMC 827
	DMC 3041
	DMC 3051
	DMC 3771
	DMC 3852
	DMC B5200

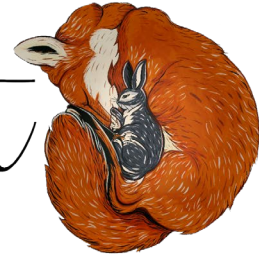
Backstitch in Wreath DMC 3051,  
Wings 415 and Legs 310

www.TheBlackberryRabbit.com  
© 2020 The Blackberry Rabbit All Rights  
Reserved.

This chart is licensed for personal use only. It  
cannot be sold or uploaded on to any websites



# Fox and Rabbit DESIGNS



Symbol	Threads
★	Weeks Dye Works 1223 Schneckley
■	Weeks Dye Works 1295 Blackboard
➡	Weeks Dye Works 2107 Blue Jeans
⦿	Weeks Dye Works 2197 Oscar
◆	Weeks Dye Works 2276 Camellia

[www.FoxAndRabbitDesigns.com](http://www.FoxAndRabbitDesigns.com)

© 2020 Fox and Rabbit Designs All Rights Reserved.

This chart is licensed for personal use only. It cannot be sold or uploaded on to any websites or file sharing sites.





We are living in trying times at the moment. Each day brings changes to how we live our daily lives. It is to say the least, stressful. In a conversation with fellow cross stitch designers, we decided one small way in which we could help our stitchers was to create a project of free designs. Each stitch you take as you work on the **#bewellandstitch** designs will bring solace to your needlework soul, Calm amongst the Crazy. As you complete each design, finish them into bowl fillers for a springtime basket of hope. And please do share your progress on social media, so we can share in the journey together. Be sure to follow the hashtags **#bewellandstitch** and **#summerhousestitcheworks**, so you can join in the movement! But most of all, Pray, Hope, Be Well & Do Not Panic!

Once you have your free charts in hand, please consider placing an order from your favorite needlework shop for the threads, fabric or trims. Shops need your patronage to get through this crisis! Check the list of shops that carry Summer House charts on my website. Enjoy the Stitch!! *Beth*

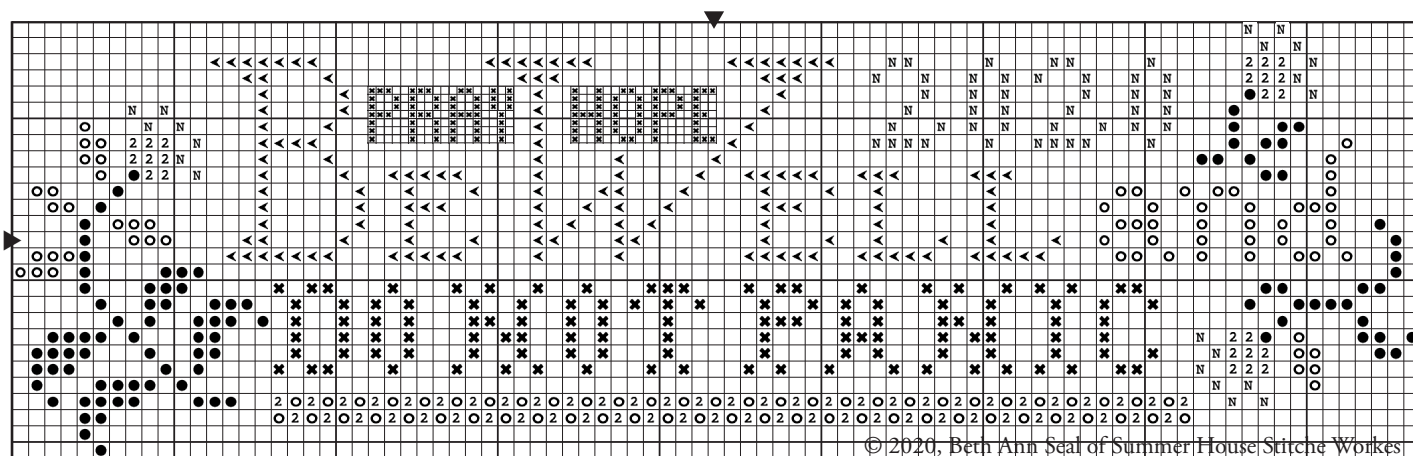


Cross stitch over two linen threads with one or two strands of floss, depending on your fabric count. The words Pray & Hope are stitched over one linen thread, so use one strand of floss for those words. The alternating line of stitches below the words, "Do Not Panic," can be stitched as cross stitches or herringbone stitch. I plan to use herringbone stitch for mine.

**Stitch Count: 87 (w) x 27 (h)**

**Fabric:** Count and color of your choice, I will use a 36 or 40 ct., as those are my favorites.

**Floss:** DMC or choose your own!



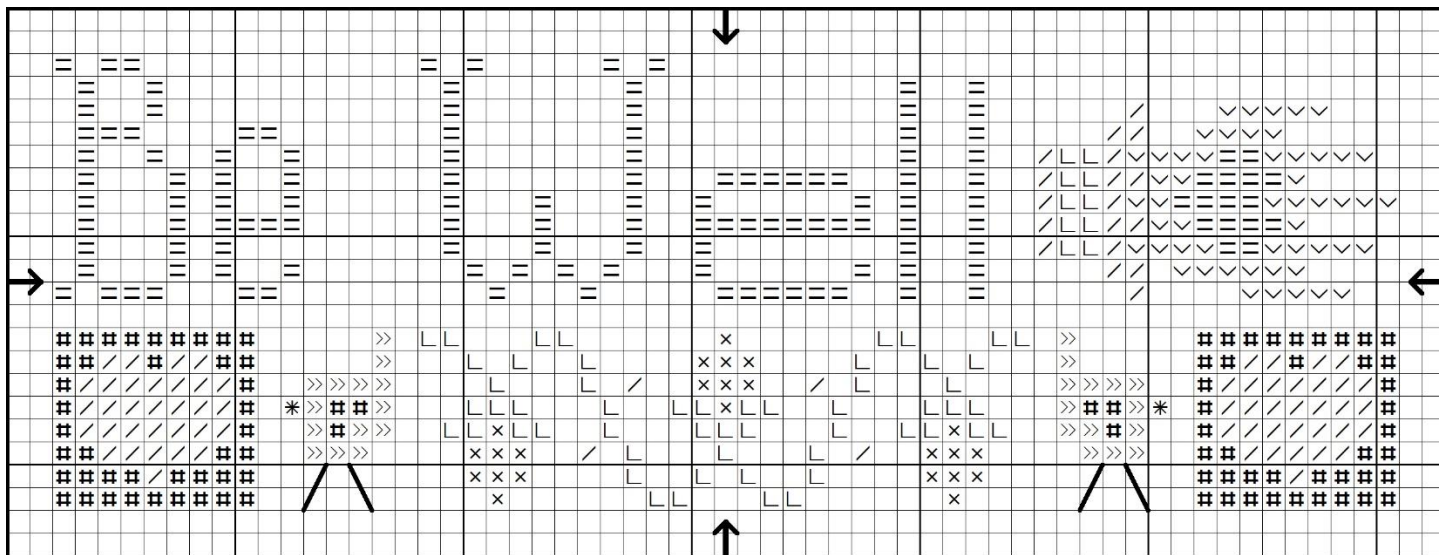
© 2020, Beth Ann Seal of Summer House Stitch Works

#### FLOSS KEY: DMC

Jade Vy Dk	561	●	Golden Olive Dk	830	◀
Moss Green	581	○	Old Gold Dk	680	N
Antique Blue Med	931	x	Desert Sand	3064	2

# be well

a free design from Cecilia Turner



copyright 2020 Heart in Hand Needleart

Codes	Classic Colorworks	DMC
>>	Dublin Bay	926
L	Eve's Leaves	3053
/	Snowball	white
X	Licorice Red	304
V	Brown Hen	842
=	Cherry Tomato	309
*	Black Coffee	310
	Weeks Dye Works	DMC
#	Hibiscus	963

Stitch Count: 59W x 20H

I suggest stitching on 32 count Wren linen from Picture This Plus over 2 threads with 2 strands thread.

Backstitch the birds' legs in 1 strand Black Coffee.

Your physical health *and* your emotional well-being are important. Be mindful of both. Stitching helps!

Be well,

*Cecilia*



[www.heartinhand.com](http://www.heartinhand.com)