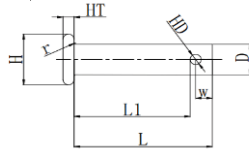


METRIC CLEVIS PINS STOCK RANGE - ZINC PLATED & 304 S/S



Diameter D (mm)	Diameter Tol	Length L (mm)	Effective Length L1 (mm)	Head Dia H (mm)	Head Thick HT (mm)	Hole Dia HD (mm)	Hole Dia Tol	R Clip Size	Zinc Plated	304 S/S
6	(+0/-0.15)	16	12	10	2	2	(+0.2/-0)	R1.8x33	•	•
6	(+0/-0.15)	20	16	10	2	2	(+0.2/-0)	R1.8x33	•	•
6	(+0/-0.15)	25	21	10	2	2	(+0.2/-0)	R1.8x33	•	•
6	(+0/-0.15)	30	26	10	2	2	(+0.2/-0)	R1.8x33	•	•
6	(+0/-0.15)	35	31	10	2	2	(+0.2/-0)	R1.8x33	•	•
6	(+0/-0.15)	40	36	10	2	2	(+0.2/-0)	R1.8x33	•	•
6	(+0/-0.15)	50	46	10	2	2	(+0.2/-0)	R1.8x33	•	•

Diameter D (mm)	Diameter Tol	Length L (mm)	Effective Length L1 (mm)	Head Dia H (mm)	Head Thick HT (mm)	Hole Dia HD (mm)	Hole Dia Tol	R Clip Size	Zinc Plated	304 S/S
8	(+0/-0.15)	16	11.5	12	2.5	2	(+0.2/-0)	R1.8x33	•	
8	(+0/-0.15)	20	15.5	12	2.5	2	(+0.2/-0)	R1.8x33	•	•
8	(+0/-0.15)	25	20.5	12	2.5	2	(+0.2/-0)	R1.8x33	•	•
8	(+0/-0.15)	30	25.5	12	2.5	2	(+0.2/-0)	R1.8x33	•	•
8	(+0/-0.15)	35	30.5	12	2.5	2	(+0.2/-0)	R1.8x33	•	•
8	(+0/-0.15)	40	35.5	12	2.5	2	(+0.2/-0)	R1.8x33	•	•
8	(+0/-0.15)	50	45.5	12	2.5	2	(+0.2/-0)	R1.8x33	•	•
8	(+0/-0.15)	60	55.5	12	2.5	2	(+0.2/-0)	R1.8x33	•	•
8	(+0/-0.15)	70	65.5	12	2.5	2	(+0.2/-0)	R1.8x33	•	•

Diameter D (mm)	Diameter Tol	Length L (mm)	Effective Length L1 (mm)	Head Dia H (mm)	Head Thick HT (mm)	Hole Dia HD (mm)	Hole Dia Tol	R Clip Size	Zinc Plated	304 S/S
10	(+0/-0.20)	20	13.9	14	2.5	3.2	(+0.2/-0)	R3x65	•	
10	(+0/-0.20)	25	18.9	14	2.5	3.2	(+0.2/-0)	R3x65	•	
10	(+0/-0.20)	30	23.9	14	2.5	3.2	(+0.2/-0)	R3x65	•	•
10	(+0/-0.20)	35	28.9	14	2.5	3.2	(+0.2/-0)	R3x65	•	•
10	(+0/-0.20)	40	33.9	14	2.5	3.2	(+0.2/-0)	R3x65	•	•
10	(+0/-0.20)	50	43.9	14	2.5	3.2	(+0.2/-0)	R3x65	•	•
10	(+0/-0.20)	60	53.9	14	2.5	3.2	(+0.2/-0)	R3x65	•	•
10	(+0/-0.20)	70	63.9	14	2.5	3.2	(+0.2/-0)	R3x65	•	•
10	(+0/-0.20)	80	73.9	14	2.5	3.2	(+0.2/-0)	R3x65	•	
10	(+0/-0.20)	100	93.9	14	2.5	3.2	(+0.2/-0)	R3x65	•	

Diameter D (mm)	Diameter Tol	Length L (mm)	Effective Length L1 (mm)	Head Dia H (mm)	Head Thick HT (mm)	Hole Dia HD (mm)	Hole Dia Tol	R Clip Size	Zinc Plated	304 S/S
12	(+0/-0.20)	20	12.9	16	3	3.2	(+0.2/-0)	R3x65	•	
12	(+0/-0.20)	25	17.9	16	3	3.2	(+0.2/-0)	R3x65	•	•
12	(+0/-0.20)	30	22.9	16	3	3.2	(+0.2/-0)	R3x65	•	•
12	(+0/-0.20)	35	27.9	16	3	3.2	(+0.2/-0)	R3x65	•	•
12	(+0/-0.20)	40	32.9	16	3	3.2	(+0.2/-0)	R3x65	•	•
12	(+0/-0.20)	50	42.9	16	3	3.2	(+0.2/-0)	R3x65	•	•
12	(+0/-0.20)	60	52.9	16	3	3.2	(+0.2/-0)	R3x65	•	•
12	(+0/-0.20)	70	62.9	16	3	3.2	(+0.2/-0)	R3x65	•	•
12	(+0/-0.20)	80	72.9	16	3	3.2	(+0.2/-0)	R3x65	•	
12	(+0/-0.20)	100	92.9	16	3	3.2	(+0.2/-0)	R3x65	•	

Diameter D (mm)	Diameter Tol	Length L (mm)	Effective Length L1 (mm)	Head Dia H (mm)	Head Thick HT (mm)	Hole Dia HD (mm)	Hole Dia Tol	R Clip Size	Zinc Plated	304 S/S
16	(+0/-0.30)	25	17	20	3.5	4	(+0.2/-0)	R3.5x75	•	
16	(+0/-0.30)	30	22	20	3.5	4	(+0.2/-0)	R3.5x75	•	
16	(+0/-0.30)	35	27	20	3.5	4	(+0.2/-0)	R3.5x75	•	•
16	(+0/-0.30)	40	32	20	3.5	4	(+0.2/-0)	R3.5x75	•	•
16	(+0/-0.30)	50	42	20	3.5	4	(+0.2/-0)	R3.5x75	•	•
16	(+0/-0.30)	60	52	20	3.5	4	(+0.2/-0)	R3.5x75	•	•
16	(+0/-0.30)	70	62	20	3.5	4	(+0.2/-0)	R3.5x75	•	•
16	(+0/-0.30)	80	72	20	3.5	4	(+0.2/-0)	R3.5x75	•	
16	(+0/-0.30)	100	92	20	3.5	4	(+0.2/-0)	R3.5x75	•	
16	(+0/-0.30)	130	122	20	3.5	4	(+0.2/-0)	R3.5x75	•	

Diameter D (mm)	Diameter Tol	Length L (mm)	Effective Length L1 (mm)	Head Dia H (mm)	Head Thick HT (mm)	Hole Dia HD (mm)	Hole Dia Tol	R Clip Size	Zinc Plated	304 S/S
20	(+0/-0.50)	30	19.5	25	4	5	(+0.2/-0)	R4x75	•	
20	(+0/-0.50)	35	24.5	25	4	5	(+0.2/-0)	R4x75	•	
20	(+0/-0.50)	40	29.5	25	4	5	(+0.2/-0)	R4x75	•	•
20	(+0/-0.50)	50	39.5	25	4	5	(+0.2/-0)	R4x75	•	•
20	(+0/-0.50)	60	49.5	25	4	5	(+0.2/-0)	R4x75	•	•
20	(+0/-0.50)	70	59.5	25	4	5	(+0.2/-0)	R4x75	•	•
20	(+0/-0.50)	80	69.5	25	4	5	(+0.2/-0)	R4x75	•	•
20	(+0/-0.50)	100	89.5	25	4	5	(+0.2/-0)	R4x75	•	
20	(+0/-0.50)	130	119.5	25	4	5	(+0.2/-0)	R4x75	•	