



AUSKEY INDUSTRIAL PTY LTD

28 Stephenson Rd.,

Seaford, VIC 3198

Ph - (03) 9770 8487 Fax - (03) 9770 8498

Email: sales@auskeyindustrial.com.au

www.auskeyindustrial.com.au

PRODUCT RANGE

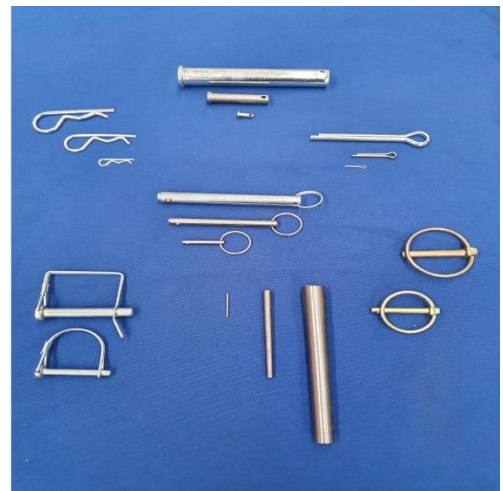


KEYSTEEL & KEYS

- Zinc Plated 12"
- Plain/Unplated – Up to 3 metres
- 304 S/S – 300mm & 1 metre
- 316 S/S – 300mm
- Gib Head Keys
- Round End Keys
- Woodruff Keys
- Cut to length Square End Keys

PIN PRODUCTS

- Clevis Pins - Metric Zinc & S/S
- Clevis Pins - Imperial Zinc & S/S
- Ball Detent Pins – Imperial Zinc & S/S
- Split/Cotter Pins – Imperial Zinc & S/S
- Taper Pins – Metric & Imperial
- Lynch Pins – Zinc & S/S
- Snapper Pins
- Dowel Pins – Coming Soon



304 S/S SHIM SHEET/COIL

- Maintenance Pack Shim Sheets
- Sheet Form
- Coil Form

Table of Contents

Group	Product	Page
Keysteel	Zinc Plated	3
Keysteel	Plain/Unplated	3
Keysteel	Stainless Steel 304 S/S	4
Keysteel	Stainless Steel 316 S/S	4
Keys	Metric Round End Keys	4
Keys	Gib Head Keys	5
Keys	Woodruff Keys	5
Keys	Metric Square End	6
Keys	Imperial Square End	6
Pins	Clevis Pins Metric Zinc Plated	7
Pins	Clevis Pins Metric 304 S/S	7
Pins	Clevis Pins Imperial Zinc Plated	8
Pins	Clevis Pins Imperial 304 S/S	8
Pins	Clevis Pins Imperial 316 S/S	8
Pins	Detent Ring Type Zinc Plated	9
Pins	Detent Ring Type 300 Series S/S	9
Pins	Detent Ring Type 316 S/S	9
Pins	Lynch Pins Zinc Plated	10
Pins	Lynch Pins 304 S/S	10
Pins	Snapper Type Zinc	10
Pins	R-Clips/Bridge Pins	11
Pins	Split/Cotter Pins Zinc Plate	11-12
Pins	Split/Cotter Pins 316 S/S	11-12
Pins	Taper Pins - Imperial	13-14
Pins	Taper Pins – Metric (DIN 1B)	15-16
Shim	304 S/S Shim Sheet and Pack Range	17

Auskey provides all information in this literature in good faith. We believe the information provided is accurate and reliable, however no warranty of accuracy, completeness or reliability is given. Nor will any responsibility be taken for errors or omissions.

AUSKEY - KEY STEEL

ABN 75 129 579 933

Ph. (03) 9770 8487 Fax. (03) 9770 8498

Email. sales@auskeyindustrial.com.au

Keysteel Product Range

STANDARD KEY STEEL SQUARE METRIC

Metric Square	12" Lgth		\$/Lgth 3.1M	Mak-A-Key USA
	Plated	Unplated		
2mm Square	●			
3mm Square	●	●	●	
4mm Square	●	●	●	
5mm Square	●	●	●	
6mm Square	●	●	●	
7mm Square	●			
8mm Square	●	●	●	
10mm Square	●	●	●	
12mm Square	●	●	●	
14mm Square	●	●	●	
16mm Square	●	●	●	
18mm Square	●	●	●	
20mm Square	●	●	●	
22mm Square	●	●	●	
25mm Square	●	●	●	
32mm Square	●	●	●	

STANDARD KEY STEEL SQUARE IMPERIAL

Imperial Square	12" Lgth		\$/Lgth 3.1M	Mak-A-Key USA
	Plated	Unplated		
1/16" Square	●			
3/32" Square	●			
1/8" Square	●	●	●	
5/32" Square	●	●	●	
3/16" Square	●	●	●	
7/32" Square				●
1/4" Square	●	●	●	
5/16" Square	●	●	●	
3/8" Square	●	●	●	
7/16" Square	●	●	●	
1/2" Square	●	●	●	
9/16" Square	●	●	●	
5/8" Square	●	●	●	
11/16" Square	●			
3/4" Square	●	●	●	
13/16" Square	●			
7/8" Square	●	●	●	
1" Square	●	●	●	
1.1/8" Square	●	●	●	
1-3/16" Square	●			
1-1/4" Square	●	●	●	
1-3/8" Square	●	●	●	
1-1/2" Square	●	●	●	
1-3/4" Square	●	●	●	
1-7/8" Square	●			
2" Square	●	●	●	
2-1/2" Square		●	●	

STANDARD KEY STEEL RECTANGLE IMPERIAL

Imperial Rectangle	12" Lgth		\$/Lgth 3.1M	Mak-A-Key USA
	Plated	Unplated		
3/16" x 1/8" Rect				●
1/4" x 1/8" Rect				●
1/4" x 3/16" Rect	●	●	●	
5/16" x 3/16" Rect	●	●	●	
5/16" x 1/4" Rect	●	●	●	
3/8" x 3/16" Rect				●
3/8" x 1/4" Rect	●	●	●	
3/8" x 5/16" Rect	●	●	●	
7/16" x 1/4" Rect				●
7/16" x 5/16" Rect	●			
7/16" x 3/8" Rect	●	●	●	
1/2" x 3/16" Rect	●			
1/2" x 1/4" Rect	●	●	●	
1/2" x 5/16" Rect	●	●	●	
1/2" x 3/8" Rect	●	●	●	
1/2" x 7/16" Rect	●	●	●	
9/16" x 5/16" Rect	●			
5/8" 5/16" Rect				●
5/8" x 3/8" Rect	●	●	●	
5/8" x 7/16" Rect	●			
5/8" x 1/2" Rect	●	●	●	
3/4" x 3/8" Rect	●	●	●	
3/4" x 1/2" Rect	●	●	●	
3/4" x 5/8" Rect	●	●	●	
7/8" x 1/2" Rect	●			
7/8" x 5/8" Rect	●	●	●	
7/8" x 3/4" Rect	●	●	●	
1" x 9/16" Rect				●
1" x 5/8" Rect	●	●	●	
1" x 11/16" Rect	●			
1" x 3/4" Rect	●	●	●	
1" x 7/8" Rect	●	●	●	
1-1/4" x 9/16" Rect				●
1-1/4" 5/8" Rect	●	●	●	
1-1/4" x 3/4" Rect	●	●	●	
1-1/4" x 7/8" Rect	●	●	●	
1-1/4" x 1" Rect	●			
1-1/2" x 3/4" Rect	●		●	
1-1/2" x 1" Rect	●	●	●	

STANDARD KEY STEEL RECTANGLE METRIC

Metric Rectangle	12" Lgth		\$/Lgth 3.1M	Mak-A-Key USA
	Plated	Unplated		
5mm x 3mm Rect	●	●	●	
8mm x 5mm Rect	●			
8mm x 7mm Rect	●	●	●	
10mm x 6mm Rect	●			
10mm x 8mm Rect	●	●	●	
12mm x 6mm Rect	●			
12mm x 8mm Rect	●	●	●	
12mm x 10mm Rect	●	●	●	
14mm x 6mm Rect	●			
14mm x 8mm Rect	●			
14mm x 9mm Rect	●	●	●	
16mm x 7mm Rect	●			
16mm x 10mm Rect	●	●	●	
18mm x 7mm Rect	●			
18mm x 10mm Rect	●			
18mm x 11mm Rect	●	●	●	
20mm x 8mm Rect	●	●	●	
20mm x 12mm Rect	●	●	●	
22mm x 9mm Rect	●	●	●	
22mm x 14mm Rect	●	●	●	
25mm x 9mm Rect	●			
25mm x 14mm Rect	●	●	●	
25mm x 22mm Rect	●	●	●	
28mm x 10mm Rect	●			
28mm x 16mm Rect	●	●	●	
28mm x 25mm Rect	●			
32mm x 18mm Rect	●	●	●	
36mm x 20mm Rect	●	●	●	
40mm x 22mm Rect	●	●	●	
45mm x 25mm Rect	●	●	●	
50mm x 28mm Rect	●	●	●	
56mm x 32mm		●	●	
63mm x 32mm		●	●	
70mm x 36mm		●	●	
80mm x 40mm		●	●	

AUSKEY - KEY STEEL STAINLESS STEEL

Ph. (03) 9770 8487 Fax. (03) 9770 8498

Email. sales@auskeyindustrial.com.au

KEY STEEL - STAINLESS STEEL

METRIC SERIES KEY STEEL - STAINLESS STEEL

Metric Square	304 S/S	304 S/S	316 S/S	316 S/S	Metric Rectangle	304 S/S	304 S/S	316 S/S
	\$/LENGTH	\$/LENGTH	\$/LENGTH	\$/LENGTH		\$/LENGTH	\$/LENGTH	\$/LENGTH
	12"	1 MTRE	12"	1 MTRE		12"	1 MTRE	12"
3mm Square			•		8mm x 7mm Rect	•	•	•
4mm Square	•	•	•		10mm x 8mm Rect	•	•	•
5mm Square	•	•	•		12mm x 8mm Rect	•	•	•
6mm Square	•	•	•		14mm x 9mm Rect	•	•	•
7mm Square	•		•		16mm x 10mm Rect	•	•	•
8mm Square	•	•	•	•	18mm x 11mm Rect	•	•	•
10mm Square	•	•	•	•	20mm x 12mm Rect	•	•	•
12mm Square	•	•	•	•	22mm x 14mm Rect			•
14mm Square	•	•			25mm x 14mm Rect			•
16mm Square	•		•		28mm x 16mm Rect			•
20mm Square	•	•	•	•	32mm x 18mm Rect			•
25mm Square	•		•		36mm x 20mm Rect			•
32mm Square			•		40mm x 22mm Rect			•

IMPERIAL SERIES KEY STEEL - STAINLESS STEEL

Imperial Square	304 S/S	304 S/S	316 S/S	316 S/S	Imperial 316 S/S Bilateral Keys (+/- Tolerance)			
	\$/LENGTH	\$/LENGTH	\$/LENGTH	\$/LENGTH	Dim 1 x Dim 2	Dim 1 Tol	Dim 2 Tol	\$/300mm
	12"	1 MTRE	12"	1 MTRE				
1/8" Square	•				5/16" x 1/4"	+/-0.005"	+/-0.002"	•
3/16" Square	•	•	•		3/8" x 1/4"	+/-0.005"	+/-0.002"	•
1/4" Square	•	•	•		3/8" x 5/16"	+/-0.005"	+/-0.0025"	•
5/16" Square	•	•	•	•	1/2" x 1/4"	+/-0.004"	+/-0.002"	•
3/8" Square	•	•	•		1/2" x 3/8"	+/-0.004"	+/-0.002"	•
7/16" Square	•		•		3/4" x 1/2"	+/-0.004"	+/-0.002"	•
1/2" Square	•	•	•					
9/16" Square	•							
5/8" Square	•	•	•					
3/4" Square	•	•	•					
7/8" Square	•	•	•					
1" Square	•	•	•					
1-1/2" Square			•					

METRIC DIN 6885 TYPE A (ROUNDED END) KEYS - BLACK OXIDE COATED

Length (L)	12mm	16mm	20mm	25mm	32mm	36mm	40mm	45mm	50mm	56mm	63mm	70mm	80mm	90mm	100mm
Size Sq															
4mm Sq	•	•	•	•	•	•									
5mm Sq		•	•	•	•	•	•								
6mm Sq			•	•	•	•	•	•	•						
8mm Sq				•	•	•	•	•	•	•					
8mm x 7mm Rect			•	•	•	•	•	•	•	•					
10mm x 8mm Rect					•	•	•	•	•	•	•	•			
12mm x 8mm Rect						•	•	•	•	•	•	•	•		
14mm x 9mm Rect							•	•	•	•	•	•	•	•	•

AUSKEY - GIB HEAD KEYS & WOODRUFF KEYS

Ph. (03) 9770 8487 Fax. (03) 9770 8498

Email. sales@auskeyindustrial.com.au

IMPERIAL GIB HEAD KEYS

Length	1"	1-1/2"	2"	2-1/2"	3"	3-1/2"	4"	4-1/2"	5"	5-1/2"	6"
Size Sq											
3/16"	•	•	•	•	•						
1/4"	•	•	•	•	•	•	•				
5/16"	•	•	•	•	•	•	•				
3/8"	•	•	•	•	•	•	•	•	•		
1/2"	•	•	•	•	•	•	•	•	•	•	•
5/8"					•	•	•	•	•	•	•
3/4"							•	•	•	•	•
7/8"							•	•	•	•	•
1"									•	•	•

METRIC GIB HEAD KEYS

Length	40mm	50mm	60mm	70mm	80mm	100mm	120mm	140mm	160mm	200mm	260mm
Size											
8mm x 7mm	•	•	•	•	•						
10mm x 8mm	•	•	•	•	•	•					
12mm x 8mm	•	•	•	•	•	•					
14mm x 9mm		•	•	•	•	•	•				
16mm x 10mm			•	•	•	•	•	•	•		
18mm x 11mm				•	•	•	•	•	•		
20mm x 12mm					•	•	•	•	•	•	
22mm x 14mm						•	•	•	•	•	
25mm x 14mm						•	•	•	•	•	
28mm x 16mm								•	•	•	
32mm x 18mm									•	•	•

AUSKEY - WOODRUFF KEYS

Ph. (03) 9770 8487 Fax. (03) 9770 8498

Email. sales@auskeyindustrial.com.au

IMPERIAL WOODRUFF KEYS

Length	1/4"	3/8"	1/2"	5/8"	3/4"	7/8"	1"	1-1/8"	1-1/4"	1-3/8"	1-1/2"
Width											
1/16"	•	•	•								
3/32"		•	•	•							
1/8"		•	•	•	•						
5/32"				•	•						
3/16"				•	•	•	•	•	•		
1/4"					•	•	•	•	•		•
5/16"							•	•			•
3/8"							•		•	•	•

METRIC WOODRUFF KEYS

Height	3.7mm	5mm	6.5mm	7.5mm	9mm	10mm	11mm	13mm
Width								
2mm	•							
3mm		•						
4mm		•	•	•				
5mm			•		•			
6mm				•	•	•	•	
8mm					•		•	•
10mm								•

KEYS - SQUARE END

METRIC SQUARE END KEYS

LENGTH TOLERANCE TO 150MM LONG (+/-1MM)
OVER 150MM LONG (+/-2MM)

PLATED (Note - Ends may not be plated) Or UNPLATED/PLAIN

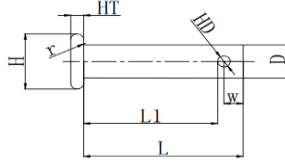
Size	16mm	20mm	25mm	30mm	32mm	36mm	40mm	45mm	50mm	60mm	70mm	80mm	90mm	100mm	120mm	140mm	160mm	180mm	200mm	250mm	
3mm Sq	•	•	•	•	•																
4mm Sq	•	•	•	•	•	•	•	•	•												
5mm Sq	•	•	•	•	•	•	•	•	•	•											
6mm Sq	•	•	•	•	•	•	•	•	•	•	•	•									
8mm Sq	•	•	•	•	•	•	•	•	•	•	•	•	•	•							
10mm Sq			•	•	•	•	•	•	•	•	•	•	•	•	•						
12mm Sq			•	•	•	•	•	•	•	•	•	•	•	•	•	•					
8 x 7mm	•	•	•	•	•	•	•	•	•	•	•	•	•	•	•						
10 x 8mm		•	•	•	•	•	•	•	•	•	•	•	•	•	•						
12 x 8mm			•	•	•	•	•	•	•	•	•	•	•	•	•	•					
12 x 10mm			•	•	•	•	•	•	•	•	•	•	•	•	•	•					
14 x 9mm				•	•	•	•	•	•	•	•	•	•	•	•	•	•				
16 x 10mm				•	•	•	•	•	•	•	•	•	•	•	•	•	•	•			
18 x 11mm						•	•	•	•	•	•	•	•	•	•	•	•	•	•		
22 x 14mm									•	•	•	•	•	•	•	•	•	•	•	•	
25 x 14mm										•	•	•	•	•	•	•	•	•	•	•	
28 x 16mm											•	•	•	•	•	•	•	•	•	•	
32 x 18mm												•	•	•	•	•	•	•	•	•	

IMPERIAL SQUARE END KEYS

Size	5/8"	3/4"	1"	1-1/4"	1-1/2"	1-3/4"	2"	2-1/4"	2-1/2"	3"	3-1/2"	4"	4-1/2"	5"	5-1/2"	6"	7"	8"	10"	
1/8" Sq	•	•	•	•	•															
3/16" Sq	•	•	•	•	•	•	•	•	•											
1/4" Sq	•	•	•	•	•	•	•	•	•	•										
5/16" Sq		•	•	•	•	•	•	•	•	•	•	•								
3/8" Sq			•	•	•	•	•	•	•	•	•	•	•	•						
7/16" Sq			•	•	•	•	•	•	•	•	•	•	•	•						
1/2" Sq							•	•	•	•	•	•	•	•	•	•				
5/8" Sq							•	•	•	•	•	•	•	•	•	•	•	•		
3/4" Sq									•	•	•	•	•	•	•	•	•	•	•	
1/4 x 3/16	•	•	•	•	•	•	•													
5/16 x 1/4	•	•	•	•	•	•	•													
3/8 x 1/4				•	•	•	•	•	•	•										
3/8 x 5/16				•	•	•	•	•	•	•										
1/2 x 5/16						•	•	•	•	•	•	•	•	•						
1/2 x 3/8							•	•	•	•	•	•	•	•						
5/8 x 1/2										•	•	•	•	•	•	•	•	•		
3/4 x 1/2											•	•	•	•	•	•	•	•	•	
3/4 x 5/8												•	•	•	•	•	•	•	•	

***Other sizes and lengths available subject to availability – contact us for further details**

METRIC CLEVIS PINS STOCK RANGE - ZINC PLATED & 304 S/S



Diameter	Diameter Tol	Length	Effective Length	Head Dia	Head Thick	Hole Dia	Hole Dia Tol	R Clip Size	Zinc Plated	304 S/S
D (mm)		L (mm)	L1 (mm)	H (mm)	HT (mm)	HD (mm)				
6	(+0/-0.15)	16	12	10	2	2	(+0.2/-0)	R1.8x33	•	•
6	(+0/-0.15)	20	16	10	2	2	(+0.2/-0)	R1.8x33	•	•
6	(+0/-0.15)	25	21	10	2	2	(+0.2/-0)	R1.8x33	•	•
6	(+0/-0.15)	30	26	10	2	2	(+0.2/-0)	R1.8x33	•	•
6	(+0/-0.15)	35	31	10	2	2	(+0.2/-0)	R1.8x33	•	•
6	(+0/-0.15)	40	36	10	2	2	(+0.2/-0)	R1.8x33	•	•
6	(+0/-0.15)	50	46	10	2	2	(+0.2/-0)	R1.8x33	•	•

Diameter	Diameter Tol	Length	Effective Length	Head Dia	Head Thick	Hole Dia	Hole Dia Tol	R Clip Size	Zinc Plated Price \$/Ea	304 S/S Price \$/Ea
D (mm)		L (mm)	L1 (mm)	H (mm)	HT (mm)	HD (mm)				
8	(+0/-0.15)	16	11.5	12	2.5	2	(+0.2/-0)	R1.8x33	•	•
8	(+0/-0.15)	20	15.5	12	2.5	2	(+0.2/-0)	R1.8x33	•	•
8	(+0/-0.15)	25	20.5	12	2.5	2	(+0.2/-0)	R1.8x33	•	•
8	(+0/-0.15)	30	25.5	12	2.5	2	(+0.2/-0)	R1.8x33	•	•
8	(+0/-0.15)	35	30.5	12	2.5	2	(+0.2/-0)	R1.8x33	•	•
8	(+0/-0.15)	40	35.5	12	2.5	2	(+0.2/-0)	R1.8x33	•	•
8	(+0/-0.15)	50	45.5	12	2.5	2	(+0.2/-0)	R1.8x33	•	•
8	(+0/-0.15)	60	55.5	12	2.5	2	(+0.2/-0)	R1.8x33	•	•
8	(+0/-0.15)	70	65.5	12	2.5	2	(+0.2/-0)	R1.8x33	•	•

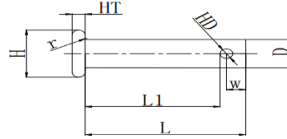
Diameter	Diameter Tol	Length	Effective Length	Head Dia	Head Thick	Hole Dia	Hole Dia Tol	R Clip Size	Zinc Plated Price \$/Ea	304 S/S Price \$/Ea
D (mm)		L (mm)	L1 (mm)	H (mm)	HT (mm)	HD (mm)				
10	(+0/-0.20)	20	13.9	14	2.5	3.2	(+0.2/-0)	R3x65	•	•
10	(+0/-0.20)	25	18.9	14	2.5	3.2	(+0.2/-0)	R3x65	•	•
10	(+0/-0.20)	30	23.9	14	2.5	3.2	(+0.2/-0)	R3x65	•	•
10	(+0/-0.20)	35	28.9	14	2.5	3.2	(+0.2/-0)	R3x65	•	•
10	(+0/-0.20)	40	33.9	14	2.5	3.2	(+0.2/-0)	R3x65	•	•
10	(+0/-0.20)	50	43.9	14	2.5	3.2	(+0.2/-0)	R3x65	•	•
10	(+0/-0.20)	60	53.9	14	2.5	3.2	(+0.2/-0)	R3x65	•	•
10	(+0/-0.20)	70	63.9	14	2.5	3.2	(+0.2/-0)	R3x65	•	•
10	(+0/-0.20)	80	73.9	14	2.5	3.2	(+0.2/-0)	R3x65	•	•
10	(+0/-0.20)	100	93.9	14	2.5	3.2	(+0.2/-0)	R3x65	•	•

Diameter	Diameter Tol	Length	Effective Length	Head Dia	Head Thick	Hole Dia	Hole Dia Tol	R Clip Size	Zinc Plated Price \$/Ea	304 S/S Price \$/Ea
D (mm)		L (mm)	L1 (mm)	H (mm)	HT (mm)	HD (mm)				
12	(+0/-0.20)	20	12.9	16	3	3.2	(+0.2/-0)	R3x65	•	•
12	(+0/-0.20)	25	17.9	16	3	3.2	(+0.2/-0)	R3x65	•	•
12	(+0/-0.20)	30	22.9	16	3	3.2	(+0.2/-0)	R3x65	•	•
12	(+0/-0.20)	35	27.9	16	3	3.2	(+0.2/-0)	R3x65	•	•
12	(+0/-0.20)	40	32.9	16	3	3.2	(+0.2/-0)	R3x65	•	•
12	(+0/-0.20)	50	42.9	16	3	3.2	(+0.2/-0)	R3x65	•	•
12	(+0/-0.20)	60	52.9	16	3	3.2	(+0.2/-0)	R3x65	•	•
12	(+0/-0.20)	70	62.9	16	3	3.2	(+0.2/-0)	R3x65	•	•
12	(+0/-0.20)	80	72.9	16	3	3.2	(+0.2/-0)	R3x65	•	•
12	(+0/-0.20)	100	92.9	16	3	3.2	(+0.2/-0)	R3x65	•	•

Diameter	Diameter Tol	Length	Effective Length	Head Dia	Head Thick	Hole Dia	Hole Dia Tol	R Clip Size	Zinc Plated Price \$/Ea	304 S/S Price \$/Ea
D (mm)		L (mm)	L1 (mm)	H (mm)	HT (mm)	HD (mm)				
16	(+0/-0.30)	25	17	20	3.5	4	(+0.2/-0)	R3.5x75	•	•
16	(+0/-0.30)	30	22	20	3.5	4	(+0.2/-0)	R3.5x75	•	•
16	(+0/-0.30)	35	27	20	3.5	4	(+0.2/-0)	R3.5x75	•	•
16	(+0/-0.30)	40	32	20	3.5	4	(+0.2/-0)	R3.5x75	•	•
16	(+0/-0.30)	50	42	20	3.5	4	(+0.2/-0)	R3.5x75	•	•
16	(+0/-0.30)	60	52	20	3.5	4	(+0.2/-0)	R3.5x75	•	•
16	(+0/-0.30)	70	62	20	3.5	4	(+0.2/-0)	R3.5x75	•	•
16	(+0/-0.30)	80	72	20	3.5	4	(+0.2/-0)	R3.5x75	•	•
16	(+0/-0.30)	100	92	20	3.5	4	(+0.2/-0)	R3.5x75	•	•
16	(+0/-0.30)	130	122	20	3.5	4	(+0.2/-0)	R3.5x75	•	•

Diameter	Diameter Tol	Length	Effective Length	Head Dia	Head Thick	Hole Dia	Hole Dia Tol	R Clip Size	Zinc Plated Price \$/Ea	304 S/S Price \$/Ea
D (mm)		L (mm)	L1 (mm)	H (mm)	HT (mm)	HD (mm)				
20	(+0/-0.50)	30	19.5	25	4	5	(+0.2/-0)	R4x75	•	•
20	(+0/-0.50)	35	24.5	25	4	5	(+0.2/-0)	R4x75	•	•
20	(+0/-0.50)	40	29.5	25	4	5	(+0.2/-0)	R4x75	•	•
20	(+0/-0.50)	50	39.5	25	4	5	(+0.2/-0)	R4x75	•	•
20	(+0/-0.50)	60	49.5	25	4	5	(+0.2/-0)	R4x75	•	•
20	(+0/-0.50)	70	59.5	25	4	5	(+0.2/-0)	R4x75	•	•
20	(+0/-0.50)	80	69.5	25	4	5	(+0.2/-0)	R4x75	•	•
20	(+0/-0.50)	100	89.5	25	4	5	(+0.2/-0)	R4x75	•	•
20	(+0/-0.50)	130	119.5	25	4	5	(+0.2/-0)	R4x75	•	•

IMPERIAL CLEVIS PINS STOCK RANGE - ZINC PLATED, 304 S/S & 316 S/S



Diameter	Diameter Tol	Length	Effective Length	Head Dia	Head Thick	Hole Dia	Hole Dia Tol	R Clip Size	Zinc Plated	304 S/S	316 S/S
D (Inches)	mm	L (Inch)	L1 (mm)	H (mm)	HT (mm)	HD (mm)	mm				
3/16"	+0/-0.18	1/2"	9.12	7.9	1.6mm	2.38	+/-0.254	R1.8 x 33			•
3/16"	+0/-0.18	3/4"	15.45	7.9	1.6mm	2.38	+/-0.254	R1.8 x 33			•
3/16"	+0/-0.18	1"	21.81	7.9	1.6mm	2.38	+/-0.254	R1.8 x 33			•
3/16"	+0/-0.18	1-1/4"	28.16	7.9	1.6mm	2.38	+/-0.254	R1.8 x 33			•
3/16"	+0/-0.18	1-1/2"	34.5	7.9	1.6mm	2.38	+/-0.254	R1.8 x 33			•
3/16"	+0/-0.18	2"	47.2	7.9	1.6mm	2.38	+/-0.254	R1.8 x 33			•

Diameter	Diameter Tol	Length	Effective Length	Head Dia	Head Thick	Hole Dia	Hole Dia Tol	R Clip Size	Zinc Plated	304 S/S	316 S/S
D (Inches)	mm	L (Inch)	L1 (mm)	H (mm)	HT (mm)	HD (mm)	mm				
1/4"	+0/-0.18	1/2"	9.12	9.4	2.3mm	2.38	+/-0.254	R1.8 x 33	•		•
1/4"	+0/-0.18	5/8"	12.29	9.4	2.3mm	2.38	+/-0.254	R1.8 x 33	•		•
1/4"	+0/-0.18	3/4"	15.47	9.4	2.3mm	2.38	+/-0.254	R1.8 x 33	•	•	•
1/4"	+0/-0.18	7/8"	18.64	9.4	2.3mm	2.38	+/-0.254	R1.8 x 33	•		•
1/4"	+0/-0.18	1"	21.81	9.4	2.3mm	2.38	+/-0.254	R1.8 x 33	•	•	•
1/4"	+0/-0.18	1-1/8"	25.00	9.4	2.3mm	2.38	+/-0.254	R1.8 x 33	•		•
1/4"	+0/-0.18	1-1/4"	28.16	9.4	2.3mm	2.38	+/-0.254	R1.8 x 33	•	•	•
1/4"	+0/-0.18	1-3/8"	31.34	9.4	2.3mm	2.38	+/-0.254	R1.8 x 33	•		•
1/4"	+0/-0.18	1-1/2"	34.51	9.4	2.3mm	2.38	+/-0.254	R1.8 x 33	•	•	•
1/4"	+0/-0.18	1-5/8"	37.65	9.4	2.3mm	2.38	+/-0.254	R1.8 x 33	•	•	•
1/4"	+0/-0.18	2"	47.21	9.4	2.3mm	2.38	+/-0.254	R1.8 x 33	•	•	•
1/4"	+0/-0.18	2-1/2"	59.91	9.4	2.3mm	2.38	+/-0.254	R1.8 x 33	•	•	•

Diameter	Diameter Tol	Length	Effective Length	Head Dia	Head Thick	Hole Dia	Hole Dia Tol	R Clip Size	Zinc Plated	304 S/S	316 S/S
D (Inches)	mm	L (Inch)	L1 (mm)	H (mm)	HT (mm)	HD (mm)	mm				
5/16"	+0/-0.18	3/4"	13.48	10.9	2.3mm	3.58	+/-0.23	R3 x 65	•	•	•
5/16"	+0/-0.18	7/8"	16.66	10.9	2.3mm	3.58	+/-0.23	R3 x 65	•		•
5/16"	+0/-0.18	1"	19.83	10.9	2.3mm	3.58	+/-0.23	R3 x 65	•	•	•
5/16"	+0/-0.18	1-1/8"	23.01	10.9	2.3mm	3.58	+/-0.23	R3 x 65	•		•
5/16"	+0/-0.18	1-1/4"	26.18	10.9	2.3mm	3.58	+/-0.23	R3 x 65	•	•	•
5/16"	+0/-0.18	1-3/8"	29.36	10.9	2.3mm	3.58	+/-0.23	R3 x 65	•		•
5/16"	+0/-0.18	1-1/2"	32.53	10.9	2.3mm	3.58	+/-0.23	R3 x 65	•	•	•
5/16"	+0/-0.18	1-3/4"	38.88	10.9	2.3mm	3.58	+/-0.23	R3 x 65	•	•	•
5/16"	+0/-0.18	2"	45.23	10.9	2.3mm	3.58	+/-0.23	R3 x 65	•	•	•
5/16"	+0/-0.18	2-1/2"	57.93	10.9	2.3mm	3.58	+/-0.23	R3 x 65	•	•	•

Diameter	Diameter Tol	Length	Effective Length	Head Dia	Head Thick	Hole Dia	Hole Dia Tol	R Clip Size	Zinc Plated	304 S/S	316 S/S
D (Inches)	mm	L (Inch)	L1 (mm)	H (mm)	HT (mm)	HD (mm)	mm				
3/8"	+0/-0.18	3/4"	13.08	13.0	3.1mm	3.96	+/-0.13	R3.5 x 75	•	•	•
3/8"	+0/-0.18	1"	19.43	13.0	3.1mm	3.96	+/-0.13	R3.5 x 75	•	•	•
3/8"	+0/-0.18	1-1/8"	22.6	13.0	3.1mm	3.96	+/-0.13	R3.5 x 75	•		•
3/8"	+0/-0.18	1-1/4"	25.78	13.0	3.1mm	3.96	+/-0.13	R3.5 x 75	•	•	•
3/8"	+0/-0.18	1-3/8"	28.95	13.0	3.1mm	3.96	+/-0.13	R3.5 x 75	•		•
3/8"	+0/-0.18	1-1/2"	32.13	13.0	3.1mm	3.96	+/-0.13	R3.5 x 75	•	•	•
3/8"	+0/-0.18	1-3/4"	38.48	13.0	3.1mm	3.96	+/-0.13	R3.5 x 75	•	•	•
3/8"	+0/-0.18	2"	44.83	13.0	3.1mm	3.96	+/-0.13	R3.5 x 75	•	•	•
3/8"	+0/-0.18	2-1/4"	51.18	13.0	3.1mm	3.96	+/-0.13	R3.5 x 75	•	•	•
3/8"	+0/-0.18	2-1/2"	57.53	13.0	3.1mm	3.96	+/-0.13	R3.5 x 75	•	•	•

Diameter	Diameter Tol	Length	Effective Length	Head Dia	Head Thick	Hole Dia	Hole Dia Tol	R Clip Size	Zinc Plated	304 S/S	316 S/S
D (Inches)	mm	L (Inch)	L1 (mm)	H (mm)	HT (mm)	HD (mm)	mm				
7/16"	+0/-0.18	1-1/4"	25.78	14.22	3.9mm	3.96	+/-0.13	R3.5 x 75	•		•
7/16"	+0/-0.18	1-1/2"	32.13	14.22	3.9mm	3.96	+/-0.13	R3.5 x 75	•		•
7/16"	+0/-0.18	2"	44.83	14.22	3.9mm	3.96	+/-0.13	R3.5 x 75	•		•

Diameter	Diameter Tol	Length	Effective Length	Head Dia	Head Thick	Hole Dia	Hole Dia Tol	R Clip Size	Zinc Plated	304 S/S	316 S/S
D (Inches)	mm	L (Inch)	L1 (mm)	H (mm)	HT (mm)	HD (mm)	mm				
1/2"	+0/-0.23	1"	19.43	15.75	3.9mm	3.96	+/-0.13	R3.5 x 75	•		•
1/2"	+0/-0.23	1-1/4"	25.78	15.75	3.9mm	3.96	+/-0.13	R3.5 x 75	•	•	•
1/2"	+0/-0.23	1-3/8"	28.94	15.75	3.9mm	3.96	+/-0.13	R3.5 x 75	•		•
1/2"	+0/-0.23	1-1/2"	32.13	15.75	3.9mm	3.96	+/-0.13	R3.5 x 75	•	•	•
1/2"	+0/-0.23	1-3/4"	38.48	15.75	3.9mm	3.96	+/-0.13	R3.5 x 75	•	•	•
1/2"	+0/-0.23	2"	44.83	15.75	3.9mm	3.96	+/-0.13	R3.5 x 75	•	•	•
1/2"	+0/-0.23	2-1/4"	51.18	15.75	3.9mm	3.96	+/-0.13	R3.5 x 75	•	•	•
1/2"	+0/-0.23	2-1/2"	57.53	15.75	3.9mm	3.96	+/-0.13	R3.5 x 75	•	•	•
1/2"	+0/-0.23	3"	70.2	15.75	3.9mm	3.96	+/-0.13	R3.5 x 75	•	•	•

Diameter	Diameter Tol	Length	Effective Length	Head Dia	Head Thick	Hole Dia	Hole Dia Tol	R Clip Size	Zinc Plated	304 S/S	316 S/S
D (Inches)	mm	L (Inch)	L1 (mm)	H (mm)	HT (mm)	HD (mm)	mm				
5/8"	+0/-0.23	1-1/2"	32.13	20.58	5.1mm	3.96	+/-0.13	R3.5 x 75			•
5/8"	+0/-0.23	1-3/4"	38.48	20.58	5.1mm	3.96	+/-0.13	R3.5 x 75	•		•
5/8"	+0/-0.23	2"	44.83	20.58	5.1mm	3.96	+/-0.13	R3.5 x 75	•		•
5/8"	+0/-0.23	2-1/2"	57.53	20.58	5.1mm	3.96	+/-0.13	R3.5 x 75	•	•	•
5/8"	+0/-0.23	3-1/2"	82.93	20.58	5.1mm	3.96	+/-0.13	R3.5 x 75	•	•	•

AUSKEY - DETENT PINS

Ph. (03) 9770 8487

Fax. (03) 9770 8498

Email. sales@auskeyindustrial.com.au



Size	Dim B	Dim A	Dim D	1010 Zinc Plated	300 S/S	316 S/S
3/16" x 1/2"	0.500"	0.188" (+/-0.006")	0.017" (+/-0.005")		•	
3/16" x 3/4"	0.750"	0.188" (+/-0.006")	0.017" (+/-0.005")		•	
3/16" x 1"	1.00"	0.188" (+/-0.006")	0.017" (+/-0.005")		•	•
3/16" x 1-1/2"	1.50"	0.188" (+/-0.006")	0.017" (+/-0.005")		•	•
3/16" x 2"	2.00"	0.188" (+/-0.006")	0.017" (+/-0.005")		•	•
3/16" x 2-1/2"	2.50"	0.188" (+/-0.006")	0.017" (+/-0.005")		•	•
3/16" x 3"	3.00"	0.188" (+/-0.006")	0.017" (+/-0.005")		•	•

Size	Dim B	Dim A	Dim D	1010 Zinc Plated	300 S/S	316 S/S
1/4" x 1/2"	0.500"	0.250" (+0/-0.004")	0.036" (+/-0.005")		•	
1/4" x 3/4"	0.75"	0.250" (+0/-0.004")	0.036" (+/-0.005")		•	
1/4" x 1"	1.00"	0.250" (+0/-0.004")	0.036" (+/-0.005")	•	•	•
1/4" x 1-1/2"	1.50"	0.250" (+0/-0.004")	0.036" (+/-0.005")	•	•	•
1/4" x 1-3/4"	1.75"	0.250" (+0/-0.004")	0.036" (+/-0.005")		•	•
1/4" x 2"	2.00"	0.250" (+0/-0.004")	0.036" (+/-0.005")	•	•	•
1/4" x 2-1/4"	2.25"	0.250" (+0/-0.004")	0.036" (+/-0.005")		•	
1/4" x 2-1/2"	2.50"	0.250" (+0/-0.004")	0.036" (+/-0.005")	•	•	•
1/4" x 3"	3.00"	0.250" (+0/-0.004")	0.036" (+/-0.005")	•	•	
1/4" x 4"	4.00"	0.250" (+0/-0.004")	0.036" (+/-0.005")		•	

Size	Dim B	Dim A	Dim D	1010 Zinc Plated	300 S/S	316 S/S
5/16" x 1"	1.00"	0.312" (+0/-0.005")	0.046" (+/-0.005")	•	•	•
5/16" x 1-1/2"	1.50"	0.312" (+0/-0.005")	0.046" (+/-0.005")	•	•	•
5/16" x 2"	2.00"	0.312" (+0/-0.005")	0.046" (+/-0.005")	•	•	
5/16" x 2-1/2"	2.50"	0.312" (+0/-0.005")	0.046" (+/-0.005")	•	•	•
5/16" x 3"	3.00"	0.312" (+0/-0.005")	0.046" (+/-0.005")	•	•	•
5/16" x 4"	4.00"	0.312" (+0/-0.005")	0.046" (+/-0.005")	•	•	•

Size	Dim B	Dim A	Dim D	1010 Zinc Plated	300 S/S	316 S/S
3/8" x 3/4"	0.75"	0.375" (+0/-0.006")	0.051" (+/-0.005")		•	
3/8" x 1"	1.00"	0.375" (+0/-0.006")	0.051" (+/-0.005")	•	•	
3/8" x 1-1/4"	1.25"	0.375" (+0/-0.006")	0.051" (+/-0.005")		•	
3/8" x 1-1/2"	1.50"	0.375" (+0/-0.006")	0.051" (+/-0.005")	•	•	•
3/8" x 2"	2.00"	0.375" (+0/-0.006")	0.051" (+/-0.005")	•	•	
3/8" x 2-1/4"	2.25"	0.375" (+0/-0.006")	0.051" (+/-0.005")		•	
3/8" x 2-1/2"	2.50"	0.375" (+0/-0.006")	0.051" (+/-0.005")	•	•	•
3/8" x 3"	3.00"	0.375" (+0/-0.006")	0.051" (+/-0.005")	•	•	•
3/8" x 3-1/2"	3.50"	0.375" (+0/-0.006")	0.051" (+/-0.005")		•	
3/8" x 4"	4.00"	0.375" (+0/-0.006")	0.051" (+/-0.005")	•	•	
3/8" x 5"	5.00"	0.375" (+0/-0.006")	0.051" (+/-0.005")		•	

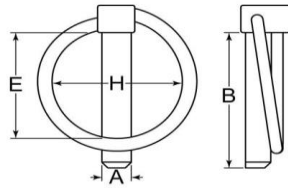
Size	Dim B	Dim A	Dim D	1010 Zinc Plated	300 S/S	316 S/S
1/2" x 1"	1.00"	0.500" (+0/-0.008")	0.070" (+/-0.005")			•
1/2" x 1-1/2"	1.50"	0.500" (+0/-0.008")	0.070" (+/-0.005")	•		•
1/2" x 2"	2.00"	0.500" (+0/-0.008")	0.070" (+/-0.005")	•	•	
1/2" x 2-1/2"	2.50"	0.500" (+0/-0.008")	0.070" (+/-0.005")	•	•	
1/2" x 3"	3.00"	0.500" (+0/-0.008")	0.070" (+/-0.005")	•	•	
1/2" x 3-1/2"	3.50"	0.500" (+0/-0.008")	0.070" (+/-0.005")		•	
1/2" x 4"	4.00"	0.500" (+0/-0.008")	0.070" (+/-0.005")	•	•	
1/2" x 5"	5.00"	0.500" (+0/-0.008")	0.070" (+/-0.005")		•	

AUSKEY - LYNCH PINS & SNAPPER PINS

Ph. (03) 9770 8487 Fax. (03) 9770 8498

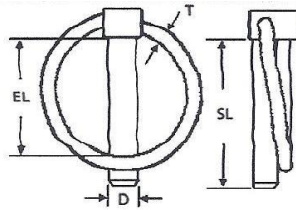
Email. sales@auskeyindustrial.com.au

METRIC LYNCH PINS



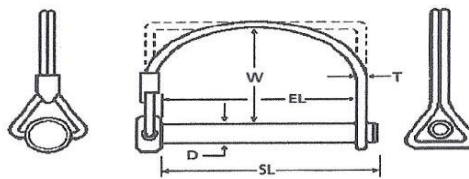
SIZE	DIM A (mm)	DIM B (mm)	DIM E (mm)	DIM H (mm)	WIRE DIA	ZINC PLATED	304 S/S
M4.5 X 32	4.5	40	32	32	3.6	•	•
M4.5 X 42	4.5	50.00	42	42	3.6	•	•
M6 X 32	6	40	32	32	3.6	•	•
M6 X 42	6	50	42	42	3.6	•	•
M8 X 32	8	40	32	32	3.6	•	•
M8 X 42	8	50	42	42	3.6	•	•
M8 X 52	8	60	52	52	3.6	•	•
M11 X 32	11	40	32	32	3.6	•	
M11 X 42	11	50	42	42	3.6	•	
M11 X 52	11	60	52	52	3.6	•	
M11 X 62	11	70	62	62	3.6	•	

IMPERIAL ZINC PLATED LYNCH PINS



SIZE (D x EL)	PIN DIA D (mm)	EL (mm)	ZINC \$/EACH
3/16" x 1"	4.76	25.40	•
3/16" x 1-1/4"	4.76	31.75	•
1/4" x 1-5/16"	6.35	33.34	•
5/16" x 1-3/8"	7.94	34.92	•
5/16" x 1-3/4"	7.94	44.45	•

SNAPPER PINS

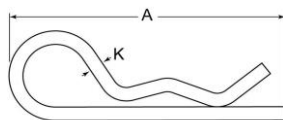


SIZE (D x L)	(mm)	EL (mm)	W (mm)	SL (mm)	Zinc Plated
1/4" x 1-3/8" Round Style	6.35	34.92	41.27	41.27	•
1/4" x 1-3/4" Round Style	6.35	44.45	41.27	50.8	•
1/4" x 2-1/4" Square Style	6.35	57.15	41.27	63.5	•
1/4" x 2-1/2" Round Style	6.35	63.50	41.27	69.85	•
1/4" x 2-1/2" Square Style	6.35	63.50	41.27	69.85	•

SIZE (D x L)	(mm)	EL (mm)	W (mm)	SL (mm)	Zinc Plated
5/16" x 1-3/8" Round Style	7.94	34.92	44.45	41.27	•
5/16" x 1-3/4" Round Style	7.94	44.45	44.45	50.8	•
5/16" x 2-1/4" Square Style	7.94	57.15	44.45	63.5	•
5/16" x 2-1/2" Round Style	7.94	63.50	44.45	69.85	•
5/16" x 2-1/2" Square Style	7.94	63.50	44.45	69.85	•
5/16" x 3" Square Style	7.94	76.20	44.45	82.55	•

SIZE (D x L)	(mm)	EL (mm)	W (mm)	SL (mm)	Zinc Plated
3/8" x 1-3/8" Round Style	9.52	34.92	38.1	41.27	•
3/8" x 1-1/2" Round Style	9.52	38.10	38.1	44.45	•
3/8" x 2-1/4" Square Style	9.52	57.15	38.1	63.5	•
3/8" x 2-1/2" Round Style	9.52	63.50	38.1	69.85	•
3/8" x 2-1/2" Square Style	9.52	63.50	38.1	69.85	•

R-CLIPS/BRIDGE PINS PRICE LIST



METRIC

R Clip Size (A x K)	Zinc Plated	304 S/S
R1.8x33	•	•
R3x65	•	•
R3.5x75	•	
R4x75	•	

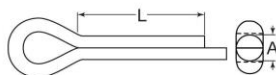
IMPERIAL 304 S/S

Size/Code	Dim K	Dim A	Price
BPS-232	0.042"	7/16"	•
BPS-223	0.042"	1"	•
BPS-213	0.080"	1-3/16"	•
BPS-2104/D	0.073"	1-7/16"	•
BPS-006/D	0.091"	2"	•
BPS-207	0.094"	2-5/16"	•
BPS-214	0.094"	2-1/2"	•
BPS-209	0.148"	3-5/16"	•

IMPERIAL 316 S/S

Size/Code	Dim K	Dim A	Price
PBS6-223	0.042"	1"	•
PBS6-213	0.08"	1-3/16"	•
PBS6-217	0.08"	1-9/16"	•
PBS6-222/D	1/16"	1-5/16"	•
PBS6-216/D	1/8"	1-5/16"	•
PBS6-211	1/8"	2-9/16"	•
PBS6-206	0.177"	3-1/4"	•

AUSKEY - COTTER PINS



ZINC AND 316 S/S COTTER PINS PRICE LIST

SIZE	DIM A (mm)	DIM L (mm)	ZINC CODE	ZINC PLATED	316 S/S CODE	316 S/S
3/64" x 3/4"	1.19	19.05	pctip-047-0750	•		
3/64 x 1"	1.19	25.4	pctip-047-1000	•		

SIZE	DIM A (mm)	DIM L (mm)	ZINC CODE	ZINC PLATED	316 S/S CODE	316 S/S
1/16 x 3/8"	1.58	9.52	pctip-062-0375	•	pctis6-062-0375	•
1/16 x 1/2"	1.58	12.7	pctip-062-0500	•	pctis6-062-0500	•
1/16 x 3/4"	1.58	19.05	pctip-062-0750	•	pctis6-062-0750	•
1/16 x 1"	1.58	25.4	pctip-062-1000	•	pctis6-062-1000	•
1/16 x 1-1/4"	1.58	31.75	pctip-062-1250	•	pctis6-062-1250	•
1/16 x 1-1/2"	1.58	38.1	pctip-062-1500	•	pctis6-062-1500	•
1/16 x 2"	1.58	50.8	pctip-062-2000	•	pctis6-062-2000	•
1/16 x 2-1/2"	1.58	63.5	pctip-062-2500	•		
1/16 x 3"	1.58	76.2	pctip-062-3000	•		

SIZE	DIM A (mm)	DIM L (mm)	ZINC CODE	ZINC PLATED	316 S/S CODE	316 S/S
5/64 x 1/2"	1.98	12.7	pctip-078-0500	•		
5/64 x 3/4"	1.98	19.05	pctip-078-0750	•		
5/64 x 1"	1.98	25.4	pctip-078-1000	•		
5/64 x 1-1/4"	1.98	31.75	pctip-078-1250	•		
5/64 x 1-1/2"	1.98	38.1	pctip-078-1500	•		
5/64 x 2"	1.98	50.8	pctip-078-2000	•		

SIZE	DIM A (mm)	DIM L (mm)	ZINC CODE	ZINC PLATED	316 S/S CODE	316 S/S
3/32" x 1/2"	2.38	12.7	pctip-094-0500	•	pctis6-094-0500	•
3/32" x 3/4"	2.38	19.05	pctip-094-0750	•	pctis6-094-0750	•
3/32" x 1"	2.38	25.4	pctip-094-1000	•	pctis6-094-1000	•
3/32" x 1-1/4"	2.38	31.75	pctip-094-1250	•	pctis6-094-1250	•
3/32" x 1-1/2"	2.38	38.1	pctip-094-1500	•	pctis6-094-1500	•
3/32" x 2"	2.38	50.8	pctip-094-2000	•	pctis6-094-2000	•
3/32" x 2-1/2"	2.38	63.5	pctip-094-2500	•	pctis6-094-2500	•
3/32" x 3"	2.38	76.2	pctip-094-3000	•		

SIZE	DIM A (mm)	DIM L (mm)	ZINC CODE	ZINC PLATED	316 S/S CODE	316 S/S
7/64" x 1/2"	2.78	12.7	pctip-109-0500	•		
7/64" x 3/4"	2.78	19.05	pctip-109-0750	•		
7/64" x 1"	2.78	25.4	pctip-109-1000	•		
7/64" x 1-1/4"	2.78	31.75	pctip-109-1250	•		
7/64" x 1-1/2"	2.78	38.1	pctip-109-1500	•		
7/64" x 2"	2.78	50.8	pctip-109-2000	•		
7/64" x 2-1/2"	2.78	63.5	pctip-109-2500	•		
7/64" x 3"	2.78	76.2	pctip-109-3000	•		

AUSKEY - COTTER PINS cont'd

SIZE	DIM A (mm)	DIM L (mm)	ZINC CODE	ZINC PLATED	316 S/S CODE	316 S/S
1/8" x 1/2"	3.18	12.7	pctip-125-0500	•		
1/8" x 3/4"	3.18	19.05	pctip-125-0750	•	pctis6-125-0750	•
1/8" x 1"	3.18	25.4	pctip-125-1000	•	pctis6-125-1000	•
1/8" x 1-1/4"	3.18	31.75	pctip-125-1250	•	pctis6-125-1250	•
1/8" x 1-1/2"	3.18	38.1	pctip-125-1500	•	pctis6-125-1500	•
1/8" x 2"	3.18	50.8	pctip-125-2000	•	pctis6-125-2000	•
1/8" x 2-1/2"	3.18	63.5	pctip-125-2500	•	pctis6-125-2500	•
1/8" x 3"	3.18	76.2	pctip-125-3000	•	pctis6-125-3000	•
1/8" x 3-1/2"	3.18	88.9	pctip-125-3500	•		
1/8" x 4"	3.18	101.6	pctip-125-4000	•		
1/8" x 5"	3.18	127	pctip-125-5000	•		

SIZE	DIM A (mm)	DIM L (mm)	ZINC CODE	ZINC PLATED	316 S/S CODE	316 S/S
9/64" x 3/4"	3.57	19.05	pctip-140-0750	•		
9/64" x 1"	3.57	25.4	pctip-140-1000	•		
9/64" x 1-1/4"	3.57	31.75	pctip-140-1250	•		
9/64" x 1-1/2"	3.57	38.1	pctip-140-1500	•		
9/64" x 2"	3.57	50.8	pctip-140-2000	•		
9/64" x 2-1/2"	3.57	63.5	pctip-140-2500	•		
9/64" x 3"	3.57	76.2	pctip-140-3000	•		

SIZE	DIM A (mm)	DIM L (mm)	ZINC CODE	ZINC PLATED	316 S/S CODE	316 S/S
5/32" x 3/4"	3.97	19.05	pctip-156-0750	•		
5/32" x 1"	3.97	25.4	pctip-156-1000	•	pctis6-156-1000	•
5/32" x 1-1/4"	3.97	31.75	pctip-156-1250	•	pctis6-156-1250	•
5/32" x 1-1/2"	3.97	38.1	pctip-156-1500	•	pctis6-156-1500	•
5/32" x 2"	3.97	50.8	pctip-156-2000	•	pctis6-156-2000	•
5/32" x 2-1/2"	3.97	63.5	pctip-156-2500	•	pctis6-156-2500	•
5/32" x 3"	3.97	76.2	pctip-156-3000	•	pctis6-156-3000	•
5/32" x 3-1/2"	3.97	88.9	pctip-156-3500	•		
5/32" x 4"	3.97	101.6	pctip-156-4000	•		

SIZE	DIM A (mm)	DIM L (mm)	ZINC CODE	ZINC PLATED	316 S/S CODE	316 S/S
3/16" x 3/4"	4.76	19.05	pctip-188-0750	•		
3/16" x 1"	4.76	25.4	pctip-188-1000	•	pctis6-188-1000	•
3/16" x 1-1/2"	4.76	38.1	pctip-188-1500	•	pctis6-188-1500	•
3/16" x 2"	4.76	50.8	pctip-188-2000	•	pctis6-188-2000	•
3/16" x 2-1/2"	4.76	63.5	pctip-188-2500	•	pctis6-188-2500	•
3/16" x 3"	4.76	76.2	pctip-188-3000	•	pctis6-188-3000	•
3/16" x 3-1/2"	4.76	88.9	pctip-188-3500	•		
3/16" x 4"	4.76	101.6	pctip-188-4000	•		
3/16" x 5"	4.76	127	pctip-188-5000	•		

SIZE	DIM A (mm)	DIM L (mm)	ZINC CODE	ZINC PLATED	316 S/S CODE	316 S/S
7/32" X 1-1/2"	5.55	38.10	pctip-218-1500	•		
7/32" X 2"	5.55	50.80	pctip-218-2000	•		
7/32" X 2-1/4"	5.55	57.15	pctip-218-2250	•		
7/32" X 2-1/2"	5.55	63.50	pctip-218-2500	•		
7/32" X 3"	5.55	76.20	pctip-218-3000	•		
7/32" X 4"	5.55	101.60	pctip-218-4000	•		

SIZE	DIM A (mm)	DIM L (mm)	ZINC CODE	ZINC PLATED	316 S/S CODE	316 S/S
1/4" x 1-1/2"	6.35	38.10	pctip-250-1500	•		
1/4" x 2"	6.35	50.80	pctip-250-2000	•	pctis6-250-2000	•
1/4" x 2-1/2"	6.35	63.50	pctip-250-2500	•	pctis6-250-2500	•
1/4" x 3"	6.35	76.20	pctip-250-3000	•	pctis6-250-3000	•
1/4" x 3-1/2"	6.35	88.90	pctip-250-3500	•		
1/4" x 4"	6.35	101.60	pctip-250-4000	•	pctis6-250-4000	•
1/4" x 5"	6.35	127.00	pctip-250-5000	•		

SIZE	DIM A (mm)	DIM L (mm)	ZINC CODE	ZINC PLATED	316 S/S CODE	316 S/S
5/16" x 2"	7.94	50.80	pctip-312-2000	•		
5/16" x 2-1/2"	7.94	63.50	pctip-312-2500	•		
5/16" x 3"	7.94	76.20	pctip-312-3000	•		
5/16" x 3-1/2"	7.94	88.90	pctip-312-3500	•		
5/16" x 4"	7.94	101.60	pctip-312-4000	•		
5/16" x 5"	7.94	127.00	pctip-312-5000	•		
5/16" x 6"	7.94	152.40	pctip-312-6000	•		

SIZE	DIM A (mm)	DIM L (mm)	ZINC CODE	ZINC PLATED	316 S/S CODE	316 S/S
3/8" x 2"	9.52	50.80	pctip-375-2000	•		
3/8" x 2-1/4"	9.52	57.15	pctip-375-2250	•		
3/8" x 2-1/2"	9.52	63.50	pctip-375-2500	•		
3/8" x 3"	9.52	76.20	pctip-375-3000	•		
3/8" x 3-1/2"	9.52	88.90	pctip-375-3500	•		
3/8" x 4"	9.52	101.6	pctip-375-4000	•		
3/8" x 5"	9.52	127	pctip-375-5000	•		
3/4" x 6"	9.52	152.4	pctip-375-6000	•		

SIZE	DIM A (mm)	DIM L (mm)	ZINC CODE	ZINC PLATED	316 S/S CODE	316 S/S
1/2" x 3"	12.7	76.2	pctip-500-3000	•		
1/2" x 4"	12.7	101.6	pctip-500-4000	•		
1/2" x 5"	12.7	127	pctip-500-5000	•		
1/2" x 6"	12.7	152.4	pctip-500-6000	•		

AUSKEY - IMPERIAL TAPER PINS

Ph. (03) 9770 8487

Fax. (03) 9770 8498

Email. sales@auskeyindustrial.com.au

IMPERIAL TAPER PINS

Nr	Large Dia (Inch)	Length	Pack Qty	Plain
#5/0	3/32"	1"	1	•
#4/0	7/64"	3/4"	1	○
#3/0	1/8"	3/4"	1	○
#3/0	1/8"	1"	1	○
#3/0	1/8"	1-1/4"	1	○
#2/0	9/64"	1/2"	1	○
#2/0	9/64"	3/4"	1	○
#2/0	9/64"	7/8"	1	○
#2/0	9/64"	1"	1	○
#2/0	9/64"	1-1/4"	1	○
#2/0	9/64"	1-1/2"	1	○
#0	5/32"	1/2"	1	○
#0	5/32"	3/4"	1	○
#0	5/32"	7/8"	1	○
#0	5/32"	1"	1	•
#0	5/32"	1-1/4"	1	•
#0	5/32"	1-1/2"	1	•
#0	5/32"	1-3/4"	1	•
#0	5/32"	2"	1	•
#0	5/32"	2-1/4"	1	○
#0	5/32"	2-1/2"	1	○
#0	5/32"	2-3/4"	1	○
#0	5/32"	3"	1	○
#0	5/32"	3-1/4"	1	○
#0	5/32"	4"	1	○
#1	11/64"	3/4"	1	•
#1	11/64"	1"	1	•
#1	11/64"	1-1/4"	1	•
#1	11/64"	1-1/2"	1	•
#1	11/64"	2"	1	•
#1	11/64"	2-1/2"	1	•
#1	11/64"	4"	1	○
#2	0.193"	3/4"	1	○
#2	0.193"	1"	1	○
#2	0.193"	1-1/4"	1	○
#2	0.193"	1-1/2"	1	•
#2	0.193"	2"	1	•
#2	0.193"	2-1/2"	1	•
#2	0.193"	3"	1	•
#2	0.193"	3-1/2"	1	○
#2	0.193"	4"	1	•

Nr	Large Dia (Inch)	Length	Pack Qty	Plain
#3	7/32"	3/4"	1	○
#3	7/32"	1"	1	○
#3	7/32"	1-1/4"	1	○
#3	7/32"	1-1/2"	1	•
#3	7/32"	1-3/4"	1	○
#3	7/32"	2"	1	•
#3	7/32"	2-1/2"	1	•
#3	7/32"	3"	1	•
#3	7/32"	3-1/2"	1	•
#3	7/32"	4"	1	•
#3	7/32"	5"	1	•
#4	1/4"	3/4"	1	○
#4	1/4"	1"	1	○
#4	1/4"	1-1/4"	1	○
#4	1/4"	1-1/2"	1	•
#4	1/4"	1-3/4"	1	○
#4	1/4"	2"	1	•
#4	1/4"	2-1/2"	1	•
#4	1/4"	3"	1	•
#4	1/4"	3-1/2"	1	○
#4	1/4"	4"	1	•
#4	1/4"	6"	1	•
#5	0.289"	3/4"	1	○
#5	0.289"	1"	1	○
#5	0.289"	1-1/4"	1	○
#5	0.289"	1-1/2"	1	•
#5	0.289"	1-3/4"	1	○
#5	0.289"	2"	1	•
#5	0.289"	2-1/4"	1	○
#5	0.289"	2-1/2"	1	•
#5	0.289"	2-3/4"	1	○
#5	0.289"	3"	1	•
#5	0.289"	3-1/2"	1	•
#5	0.289"	4"	1	•
#5	0.289"	4-1/2"	1	•
#5	0.289"	5"	1	•
#5	0.289"	6"	1	•

○ Denotes Available ex- overseas as at pri
Delivery 3-4 weeks

IMPERIAL TAPER PINS cont'd

Nr	Large Dia (Inch)	Length	Pack Qty	Plain
#6	0.341"	1"	1	○
#6	0.341"	1-1/4"	1	○
#6	0.341"	1-1/2"	1	○
#6	0.341"	1-3/4"	1	○
#6	0.341"	2"	1	○
#6	0.341"	2-1/4"	1	○
#6	0.341"	2-1/2"	1	○
#6	0.341"	2-3/4"	1	○
#6	0.341"	3"	1	●
#6	0.341"	3-1/2"	1	●
#6	0.341"	4"	1	●
#6	0.341"	4-1/2"	1	●
#6	0.341"	5"	1	●
#6	0.341"	6"	1	●
#6	0.341"	7"	1	○
#7	0.409"	1-1/4"	1	○
#7	0.409"	1-1/2"	1	○
#7	0.409"	1-3/4"	1	○
#7	0.409"	2"	1	●
#7	0.409"	2-1/4"	1	○
#7	0.409"	2-1/2"	1	●
#7	0.409"	2-3/4"	1	○
#7	0.409"	3"	1	●
#7	0.409"	3-1/4"	1	○
#7	0.409"	3-1/2"	1	●
#7	0.409"	4"	1	●
#7	0.409"	4-1/2"	1	○
#7	0.409"	5"	1	●
#7	0.409"	6"	1	●
#7	0.409"	7"	1	○
#8	0.492"	1-1/2"	1	○
#8	0.492"	1-3/4"	1	○
#8	0.492"	2"	1	○
#8	0.492"	2-1/2"	1	○
#8	0.492"	2-3/4"	1	○
#8	0.492"	3"	1	●
#8	0.492"	3-1/2"	1	○
#8	0.492"	4"	1	●
#8	0.492"	4-1/2"	1	○
#8	0.492"	5"	1	●
#8	0.492"	7"	1	○

Nr	Large Dia (Inch)	Length	Pack Qty	Plain
#9	0.591"	2"	1	○
#9	0.591"	2-1/2"	1	○
#9	0.591"	3"	1	○
#9	0.591"	3-1/2"	1	○
#9	0.591"	4"	1	●
#9	0.591"	5"	1	○
#9	0.591"	5-1/2"	1	○
#9	0.591"	6"	1	●
#9	0.591"	7"	1	○
#10	0.706"	2"	1	○
#10	0.706"	2-1/2"	1	○
#10	0.706"	3"	1	○
#10	0.706"	3-1/2"	1	○
#10	0.706"	4"	1	●
#10	0.706"	5"	1	○
#10	0.706"	5-1/2"	1	○
#10	0.706"	6"	1	●
#10	0.706"	7"	1	○
#11	0.860"	6"	1	○
#11	0.860"	8"	1	○
#11	0.860"	9"	1	○
#11	0.860"	12"	1	○
#12	1.032"	6"	1	○
#12	1.032"	8"	1	○
#12	1.032"	12"	1	○
#13	1.241"	12"	1	○
#14	1.523"	12"	1	○

○ Denotes Available ex- overseas as at printing. Delivery 3-4 weeks
 Stock will be added as sales justify

Stainless Steel and Threaded Type available 3-4 weeks subject suppliers stock

METRIC DIN 1B TAPER PINS

*Nb DIN 1B Pins are measured on small diameter

Code	SIZE	LIST
PTM-003-012-DIN1	M3 X 12	•
PTM-003-016-DIN1	M3 X 16	•
PTM-003-020-DIN1	M3 X 20	•
PTM-003-024-DIN1	M3 X 24	•
PTM-003-030-DIN1	M3 X 30	•
PTM-003-036-DIN1	M3 X 36	•
PTM-003-040-DIN1	M3 X 40	•
PTM-003-050-DIN1	M3 X 50	•
PTM-003-060-DIN1	M3 X 60	•

PTM-004-016-DIN1	M4 X 16	•
PTM-004-020-DIN1	M4 X 20	•
PTM-004-024-DIN1	M4 X 24	•
PTM-004-030-DIN1	M4 X 30	•
PTM-004-036-DIN1	M4 X 36	•
PTM-004-040-DIN1	M4 X 40	•
PTM-004-050-DIN1	M4 X 50	•
PTM-004-060-DIN1	M4 X 60	•
PTM-004-080-DIN1	M4 X 80	•

PTM-005-020-DIN1	M5 X 20	•
PTM-005-024-DIN1	M5 X 24	•
PTM-005-030-DIN1	M5 X 30	•
PTM-005-036-DIN1	M5 X 36	•
PTM-005-040-DIN1	M5 X 40	•
PTM-005-050-DIN1	M5 X 50	•
PTM-005-060-DIN1	M5 X 60	•
PTM-005-080-DIN1	M5 X 80	•

PTM-006-020-DIN1	M6 X 20	•
PTM-006-024-DIN1	M6 X 24	•
PTM-006-030-DIN1	M6 X 30	•
PTM-006-036-DIN1	M6 X 36	•
PTM-006-040-DIN1	M6 X 40	•
PTM-006-050-DIN1	M6 X 50	•
PTM-006-060-DIN1	M6 X 60	•
PTM-006-070-DIN1	M6 X 70	•
PTM-006-080-DIN1	M6 X 80	•
PTM-006-100-DIN1	M6 X 100	•

AUSKEY - METRIC TAPER PINS

Ph. (03) 9770 8487 Fax. (03) 9770 8498

Email. sales@auskeyindustrial.com.au

METRIC DIN 1B TAPER PINS cont'd

PTM-008-030-DIN1	M8 X 30	•
PTM-008-036-DIN1	M8 X 36	•
PTM-008-040-DIN1	M8 X 40	•
PTM-008-050-DIN1	M8 X 50	•
PTM-008-060-DIN1	M8 X 60	•
PTM-008-080-DIN1	M8 X 80	•
PTM-008-100-DIN1	M8 X 100	•
PTM-008-120-DIN1	M8 X 120	•
PTM-008-150-DIN1	M8 X 150	•

PTM-010-040-DIN1	M10 X 40	•
PTM-010-050-DIN1	M10 X 50	•
PTM-010-060-DIN1	M10 X 60	•
PTM-010-070-DIN1	M10 X 70	•
PTM-010-080-DIN1	M10 X 80	•
PTM-010-100-DIN1	M10 X 100	•
PTM-010-120-DIN1	M10 X 120	•
PTM-010-150-DIN1	M10 X 150	•

PTM-012-040-DIN1	M12 X 40	•
PTM-012-050-DIN1	M12 X 50	•
PTM-012-060-DIN1	M12 X 60	•
PTM-012-070-DIN1	M12 X 70	•
PTM-012-080-DIN1	M12 X 80	•
PTM-012-100-DIN1	M12 X 100	•
PTM-012-120-DIN1	M12 X 120	•
PTM-012-150-DIN1	M12 X 150	•

AUSKEY – 304 S/S Shim

Ph. (03) 9770 8487

Fax. (03) 9770 8498

Email. sales@auskeyindustrial.com.au

INDIVIDUAL SHEETS

Thickness	150 Sq	150 x 300	150 x 600	150 x 1000	150 x longer	300 x 300	300 x 600	300 x 1000	300 x Longer
0.050	•	•	•	•	•	•	•	•	•
0.080	•	•	•	•	•	•	•	•	•
0.100	•	•	•	•	•	•	•	•	•
0.127	•	•	•	•	•	•	•	•	•
0.160	•	•	•	•	•	•	•	•	•
0.178	•	•	•	•	•	•	•	•	•
0.200	•	•	•	•	•	•	•	•	•
0.250	•	•	•	•	•	•	•	•	•
0.300	•	•	•	•	•	•	•	•	•
0.380	•	•	•	•	•	•	•	•	•
0.500	•	•	•	•	•	•	•	•	•

PACKS

	Mini 150	Maxi 150	Mini 300150	Maxi 300150	Mini 300	Maxi 300
Thickness	150 Sq	150 Sq	300 x 150	300 x 150	300 x 300	300 x 300
0.050	2	2	2	2	2	2
0.080	2	1	2	1	2	1
0.100		1		1		1
0.127		1		1		1
0.160	1	1	1	1	1	1
0.178		1		1		1
0.200		1		1		1
0.250	1	1	1	1	1	1
0.300		1		1		1
0.380		1		1		1
0.500		1		1		1
	•	•	•	•	•	•