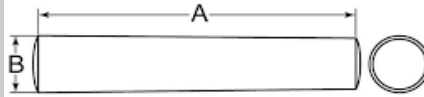




TAPER PIN RANGE – IMPERIAL ASME B18.8.2



Nr	Large Dia (Inch)	Length
#5/0	3/32"	1/2"
#4/0	7/64"	3/4"
#3/0	1/8"	3/4"
#3/0	1/8"	1"
#3/0	1/8"	1-1/4"
#2/0	9/64"	1/2"
#2/0	9/64"	3/4"
#2/0	9/64"	7/8"
#2/0	9/64"	1"
#2/0	9/64"	1-1/4"
#2/0	9/64"	1-1/2"
#0	5/32"	1/2"
#0	5/32"	3/4"
#0	5/32"	7/8"
#0	5/32"	1"
#0	5/32"	1-1/4"
#0	5/32"	1-1/2"
#0	5/32"	1-3/4"
#0	5/32"	2"
#0	5/32"	2-1/4"
#0	5/32"	2-1/2"
#0	5/32"	2-3/4"
#0	5/32"	3"
#0	5/32"	3-1/4"
#0	5/32"	4"
#1	11/64"	3/4"
#1	11/64"	1"
#1	11/64"	1-1/4"
#1	11/64"	1-1/2"
#1	11/64"	2"
#1	11/64"	2-1/2"
#1	11/64"	4"
#2	0.193"	3/4"
#2	0.193"	1"
#2	0.193"	1-1/4"
#2	0.193"	1-1/2"
#2	0.193"	2"
#2	0.193"	2-1/2"
#2	0.193"	3"
#2	0.193"	3-1/2"
#2	0.193"	4"

Nr	Large Dia (Inch)	Length
#3	7/32"	3/4"
#3	7/32"	1"
#3	7/32"	1-1/4"
#3	7/32"	1-1/2"
#3	7/32"	1-3/4"
#3	7/32"	2"
#3	7/32"	2-1/2"
#3	7/32"	3"
#3	7/32"	3-1/2"
#3	7/32"	4"
#3	7/32"	5"
#4	1/4"	3/4"
#4	1/4"	1"
#4	1/4"	1-1/4"
#4	1/4"	1-1/2"
#4	1/4"	1-3/4"
#4	1/4"	2"
#4	1/4"	2-1/2"
#4	1/4"	3"
#4	1/4"	3-1/2"
#4	1/4"	4"
#4	1/4"	6"
#5	0.289"	3/4"
#5	0.289"	1"
#5	0.289"	1-1/4"
#5	0.289"	1-1/2"
#5	0.289"	1-3/4"
#5	0.289"	2"
#5	0.289"	2-1/4"
#5	0.289"	2-1/2"
#5	0.289"	2-3/4"
#5	0.289"	3"
#5	0.289"	3-1/2"
#5	0.289"	4"
#5	0.289"	4-1/2"
#5	0.289"	5"
#5	0.289"	6"

Nr	Large Dia (Inch)	Length
#6	0.341"	1"
#6	0.341"	1-1/4"
#6	0.341"	1-1/2"
#6	0.341"	1-3/4"
#6	0.341"	2"
#6	0.341"	2-1/4"
#6	0.341"	2-1/2"
#6	0.341"	2-3/4"
#6	0.341"	3"
#6	0.341"	3-1/2"
#6	0.341"	4"
#6	0.341"	4-1/2"
#6	0.341"	5"
#6	0.341"	6"
#6	0.341"	7"
#7	0.409"	1-1/4"
#7	0.409"	1-1/2"
#7	0.409"	1-3/4"
#7	0.409"	2"
#7	0.409"	2-1/4"
#7	0.409"	2-1/2"
#7	0.409"	2-3/4"
#7	0.409"	3"
#7	0.409"	3-1/4"
#7	0.409"	3-1/2"
#7	0.409"	4"
#7	0.409"	4-1/2"
#7	0.409"	5"
#7	0.409"	6"
#7	0.409"	7"
#8	0.492"	1-1/2"
#8	0.492"	1-3/4"
#8	0.492"	2"
#8	0.492"	2-1/2"
#8	0.492"	2-3/4"
#8	0.492"	3"
#8	0.492"	3-1/2"
#8	0.492"	4"
#8	0.492"	4-1/2"
#8	0.492"	5"
#8	0.492"	7"

Nr	Large Dia (Inch)	Length
#9	0.591"	2"
#9	0.591"	2-1/2"
#9	0.591"	3"
#9	0.591"	3-1/2"
#9	0.591"	4"
#9	0.591"	5"
#9	0.591"	5-1/2"
#9	0.591"	6"
#9	0.591"	7"
#10	0.706"	2"
#10	0.706"	2-1/2"
#10	0.706"	3"
#10	0.706"	3-1/2"
#10	0.706"	4"
#10	0.706"	5"
#10	0.706"	5-1/2"
#10	0.706"	6"
#10	0.706"	7"
#11	0.860"	6"
#11	0.860"	8"
#11	0.860"	9"
#11	0.860"	12"
#12	1.032"	6"
#12	1.032"	8"
#12	1.032"	12"
#13	1.241"	12"
#14	1.523"	12"

\*Not all sizes available from Stock. Stainless Steel and Threaded Taper Pins also available from supplier.